

Supplementary Material

Rodríguez, M. & Cursach, J. 2024. First demographic assessment of the recently discovered population of the narrow endemic *Femeniasia balearica* (Asteraceae) from the Balearic Islands (Western Mediterranean). *Mediterr. Bot. Online First*, e94857.

<https://doi.org/10.5209/mbot.94857>

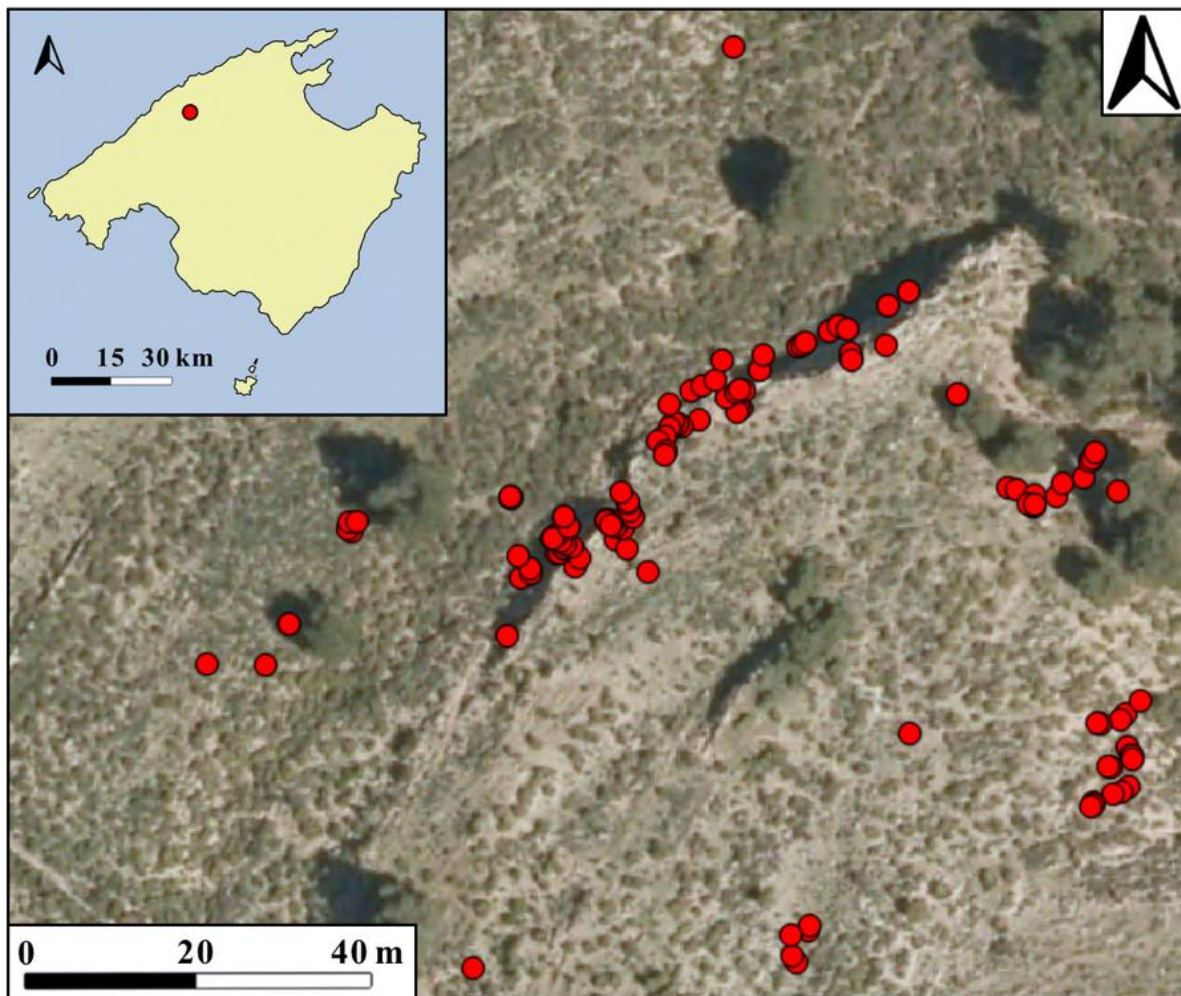


Figure S1. Distribution map of *Femeniasia balearica* in the population of CUB (each red dot represents an individual).

Supplementary Material

Rodríguez, M. & Cursach, J. 2024. First demographic assessment of the recently discovered population of the narrow endemic *Femeniasia balearica* (Asteraceae) from the Balearic Islands (Western Mediterranean). *Mediterr. Bot. Online First*, e94857.

<https://doi.org/10.5209/mbot.94857>

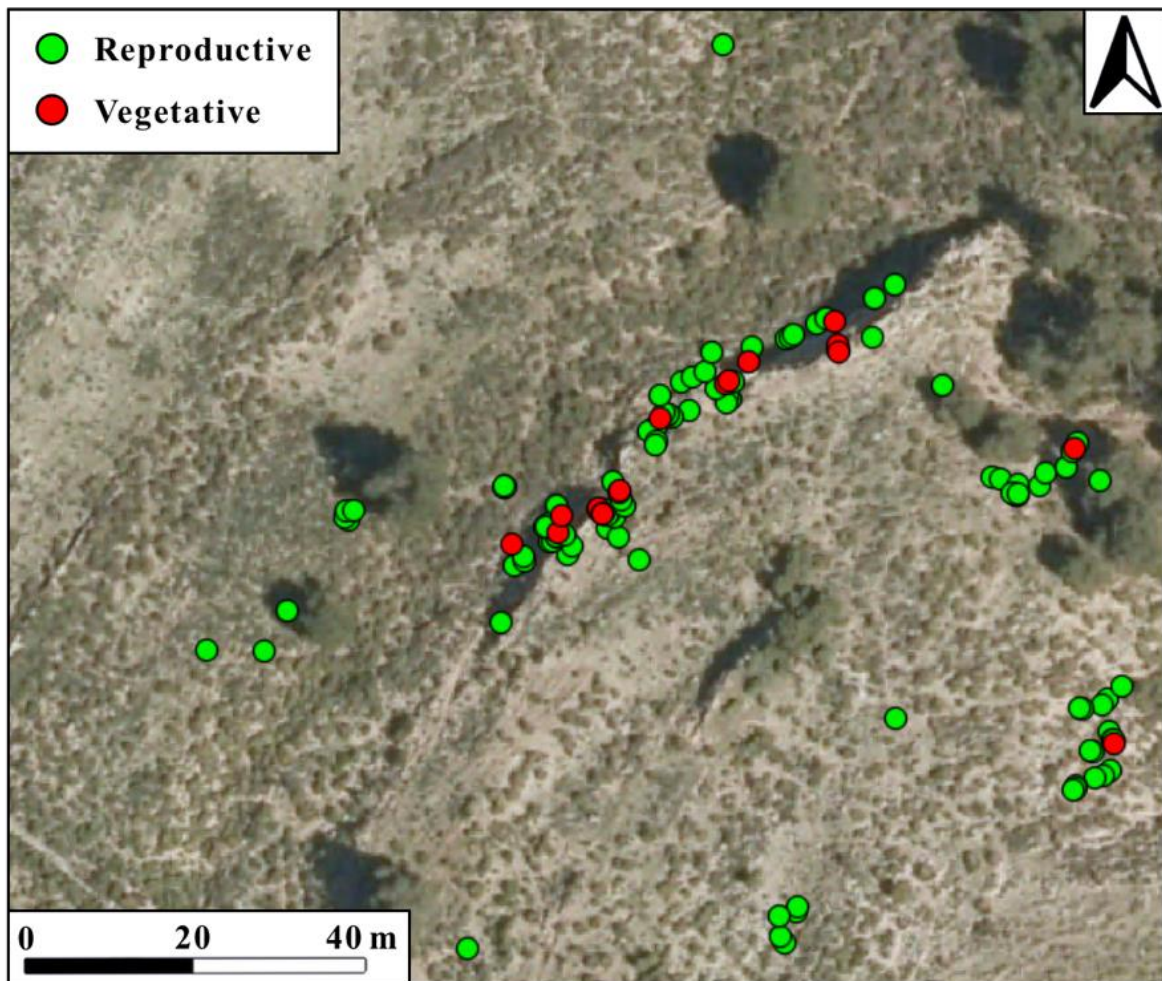


Figure S2. Distribution of *Femeniasia balearica* according to reproductive (green) and vegetative (red) individuals.

Supplementary Material

Rodríguez, M. & Cursach, J. 2024. First demographic assessment of the recently discovered population of the narrow endemic *Femeniasia balearica* (Asteraceae) from the Balearic Islands (Western Mediterranean). *Mediterr. Bot. Online First*, e94857.

<https://doi.org/10.5209/mbot.94857>

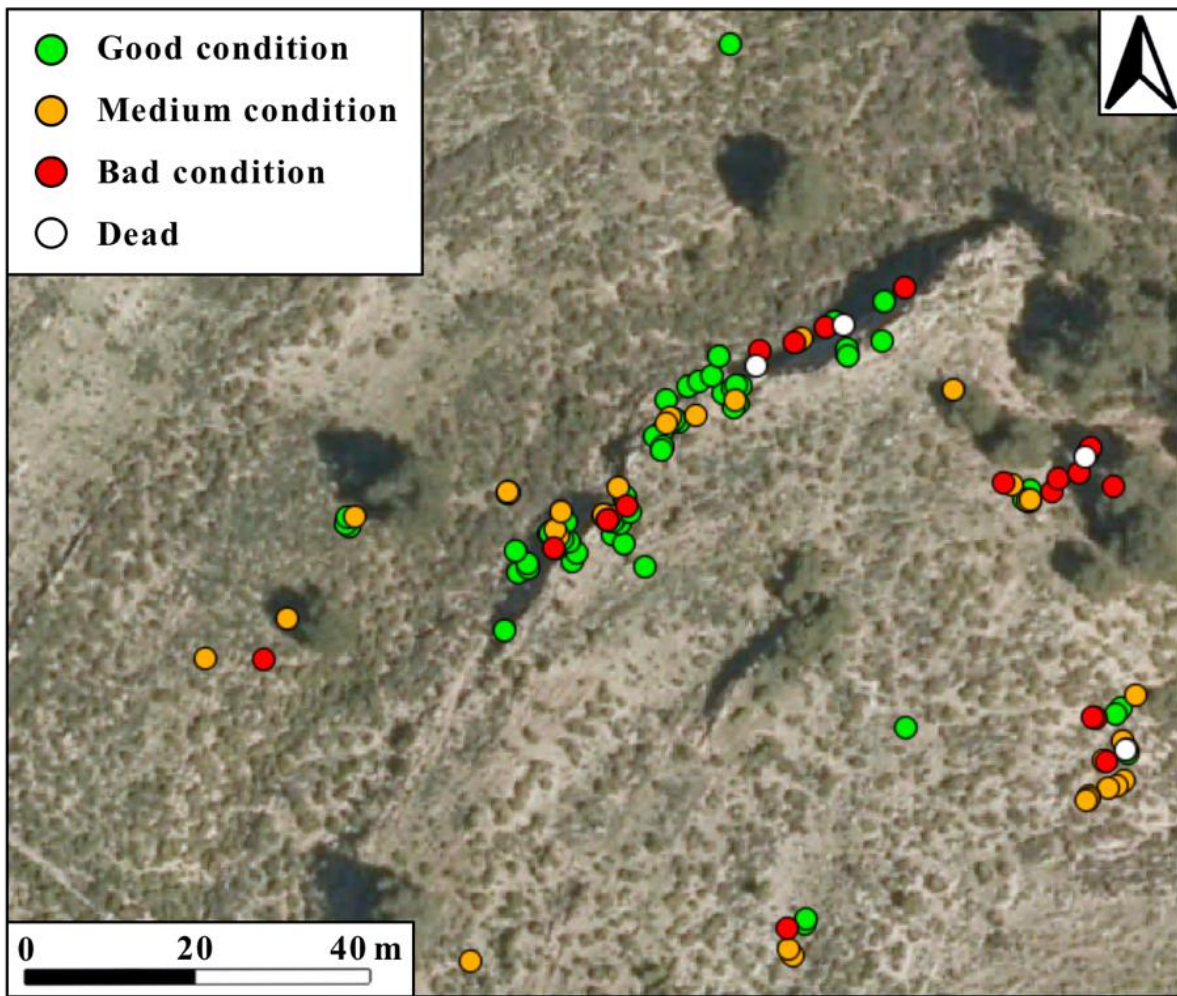


Figure S3. Distribution of *Femeniasia balearica* according to the general condition of the individuals; green: Good; orange: Medium; red: Bad; white: Dead.

Supplementary Material

Rodríguez, M. & Cursach, J. 2024. First demographic assessment of the recently discovered population of the narrow endemic *Femeniasia balearica* (Asteraceae) from the Balearic Islands (Western Mediterranean). *Mediterr. Bot. Online First*, e94857.

<https://doi.org/10.5209/mbot.94857>

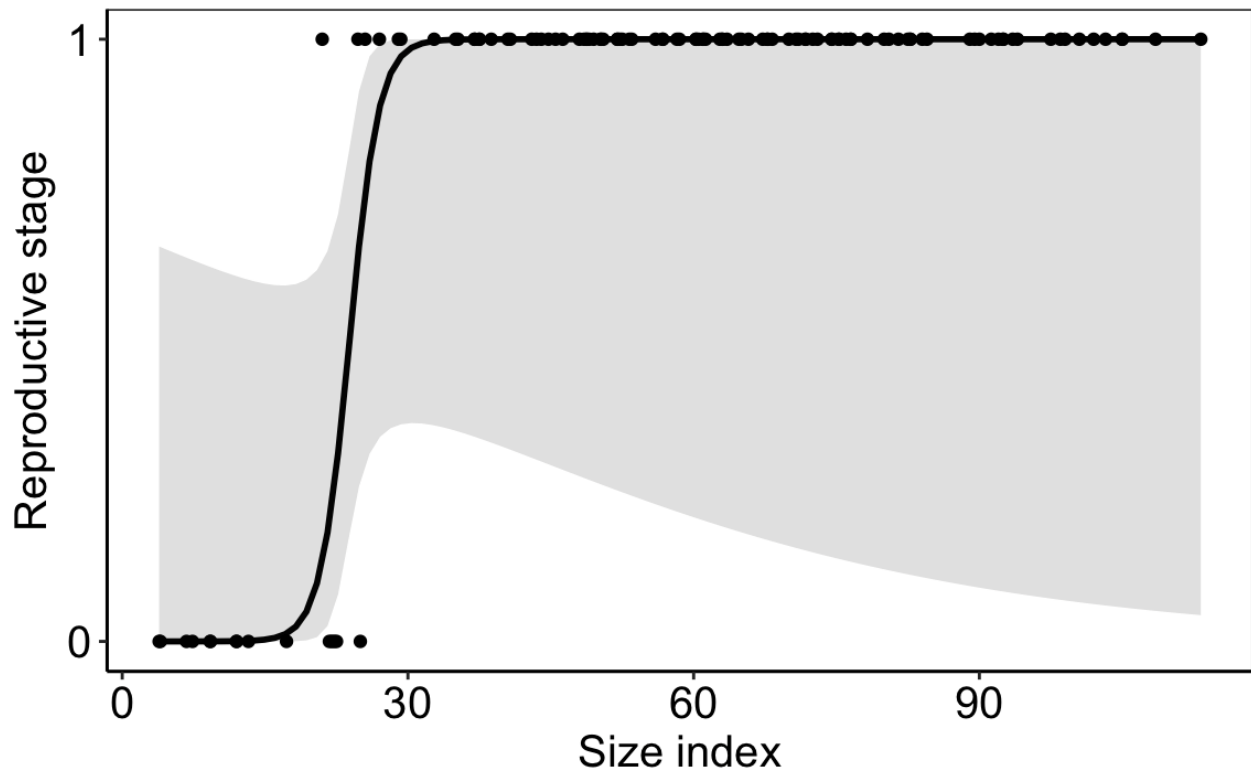


Figure S4. Effect of plant size (i.e., size index) on the reproductive stage of individuals. Reproductive stage values of 1 indicate reproductive individuals and values of 0 indicate non-reproductive individuals.

Supplementary Material

Rodríguez, M. & Cursach, J. 2024. First demographic assessment of the recently discovered population of the narrow endemic *Femeniasia balearica* (Asteraceae) from the Balearic Islands (Western Mediterranean). *Mediterr. Bot. Online First*, e94857.

<https://doi.org/10.5209/mbot.94857>

Table S1. Accompanying species of *Femeniasia balearica* in the CUB population and their frequency of appearance in the transects respect to the sampled points (750 points). The nomenclature of scientific names is in accordance with POWO (2024), except for *Anagallis arvensis* L. in which case *Flora iberica* (Pujadas, 1997) was used.

Species	Frequency (%)
<i>Aegilops geniculata</i> Roth	0.53
<i>Ampelodesmos mauritanicus</i> (Poir.) T. Durand & Schinz	56.53
<i>Anagallis arvensis</i> L.	0.40
<i>Asparagus acutifolius</i> L.	0.27
<i>Asphodelus ramosus</i> L. subsp. <i>ramosus</i>	21.20
<i>Astragalus balearicus</i> Chater	9.47
<i>Bellium bellidioides</i> L.	0.40
<i>Brachypodium distachyon</i> (L.) P. Beauv.	44.93
<i>Brachypodium retusum</i> (Pers.) P. Beauv.	2.93
<i>Bromus diandrus</i> Roth	1.33
<i>Bupleurum baldense</i> Turra	0.67
<i>Calicotome spinosa</i> (L.) Link	1.87
<i>Carlina corymbosa</i> L.	3.87
<i>Carex rorulenta</i> Porta	1.33
<i>Catapodium marinum</i> (L.) C.E. Hubb.	4.13
<i>Cerastium</i> Tourn. ex L. sp.	0.13
<i>Crepis triasii</i> (Cambess.) Nyman	0.13
<i>Crucianella angustifolia</i> L.	0.27
<i>Dactylis glomerata</i> subsp. <i>hispanica</i> (Roth) Nyman	8.13
<i>Draba verna</i> L.	0.40
<i>Ephedra fragilis</i> Desf.	0.53
<i>Erodium cicutarium</i> (L.) L'Hér.	0.13
<i>Eryngium campestre</i> L.	0.80
<i>Euphorbia characias</i> L.	5.20
<i>Euphorbia pithyusa</i> L.	0.27
<i>Femeniasia balearica</i> (J.J. Rodr.) Susanna	1.73
<i>Filago pygmaea</i> L.	1.87
<i>Galium crespianum</i> Rodr.	1.33
<i>Galium murale</i> (L.) All.	0.93
<i>Geranium columbinum</i> L.	0.13
<i>Hedypnois rhagadioloides</i> (L.) F.W. Schmidt	1.07
<i>Hieracium</i> L. sp.	0.80
<i>Hyoseris radiata</i> L.	0.13
<i>Hypericum balearicum</i> L.	1.07
<i>Hypochaeris achyrophorus</i> L.	22.00
<i>Juniperus oxycedrus</i> L. var. <i>oxycedrus</i>	2.27
<i>Linum strictum</i> L.	7.60
<i>Lysimachia linum-stellatum</i> L.	0.27
<i>Malva setigera</i> K.F. Schimp. & Spenn.	0.13

Supplementary Material

Rodríguez, M. & Cursach, J. 2024. First demographic assessment of the recently discovered population of the narrow endemic *Femeniasia balearica* (Asteraceae) from the Balearic Islands (Western Mediterranean). *Mediterr. Bot. Online First*, e94857.

<https://doi.org/10.5209/mbot.94857>

<i>Medicago minima</i> (L.) Bartal.	6.67
<i>Melica minuta</i> L.	0.13
<i>Melilotus</i> Mill. sp.	0.67
<i>Ornithogalum narbonense</i> L.	0.13
<i>Phlomis italica</i> L.	1.87
<i>Pinus halepensis</i> Mill.	0.93
<i>Plantago bellardii</i> All.	2.00
<i>Plantago lanceolata</i> L.	2.40
<i>Polypodium cambricum</i> L.	0.13
<i>Ranunculus parviflorus</i> Loefl.	0.27
<i>Reichardia picroides</i> (L.) Roth	3.60
<i>Rosa</i> L. sp.	0.27
<i>Rubia peregrina</i> subsp. <i>longifolia</i> (Poir.) O. Bolòs	4.93
<i>Sanguisorba</i> L. sp.	2.40
<i>Scorpiurus</i> L. sp.	0.53
<i>Sedum dasyphyllum</i> L. subsp. <i>dasyphyllum</i>	0.67
<i>Selaginella denticulata</i> (L.) Spring	2.67
<i>Senecio vulgaris</i> L.	0.40
<i>Sherardia arvensis</i> L.	3.20
<i>Sideritis romana</i> L.	0.80
<i>Silene vulgaris</i> (Moench) Garcke	0.13
<i>Smilax aspera</i> L.	9.47
<i>Teucrium balearicum</i> (Coss. ex Pau) Castrov. & Bayon	2.13
<i>Theligonum cynocrambe</i> L.	2.67
<i>Torilis</i> Adans. sp.	2.67
<i>Trifolium scabrum</i> L.	2.27
<i>Valantia muralis</i> L.	1.87

Supplementary Material

Rodríguez, M. & Cursach, J. 2024. First demographic assessment of the recently discovered population of the narrow endemic *Femeniasia balearica* (Asteraceae) from the Balearic Islands (Western Mediterranean). *Mediterr. Bot. Online First*, e94857.

<https://doi.org/10.5209/mbot.94857>

Table S2. Accompanying species of *Femeniasia balearica* in CUB that have not appeared in the transects but were present in the study area. The nomenclature of scientific names is in accordance with POWO (2024).

Species
<i>Arabis verna</i> (L.) W.T. Aiton
<i>Argyrolobium zanonii</i> (Turra) P.W. Ball
<i>Asplenium ceterach</i> L. subsp. <i>ceterach</i>
<i>Asplenium trichomanes</i> subsp. <i>quadrialeans</i> D.E. Mey.
<i>Blackstonia</i> Huds. sp.
<i>Cirsium vulgare</i> (Savi) Ten.
<i>Clematis cirrhosa</i> L.
<i>Clypeola jonthlaspi</i> L.
<i>Colchicum filifolium</i> (Cambess.) Stef.
<i>Crepis</i> L. sp.
<i>Galactites tomentosus</i> Moench
<i>Geranium lucidum</i> L.
<i>Helictochloa bromoides</i> (Gouan) Romero Zarco subsp. <i>bromoides</i>
<i>Lagurus ovatus</i> L.
<i>Medicago orbicularis</i> (L.) Bartal.
<i>Micromeria filiformis</i> (Aiton) Benth.
<i>Ononis minutissima</i> L.
<i>Ophrys fusca</i> Link
<i>Petrosedum sediforme</i> (Jacq.) Grulich
<i>Prunus × fruticans</i> Weihe
<i>Teucrium chamaedrys</i> L.
<i>Trifolium campestre</i> Schreb.
<i>Trifolium stellatum</i> L.
<i>Urospermum picroides</i> (L.) Scop. ex F.W. Schmidt