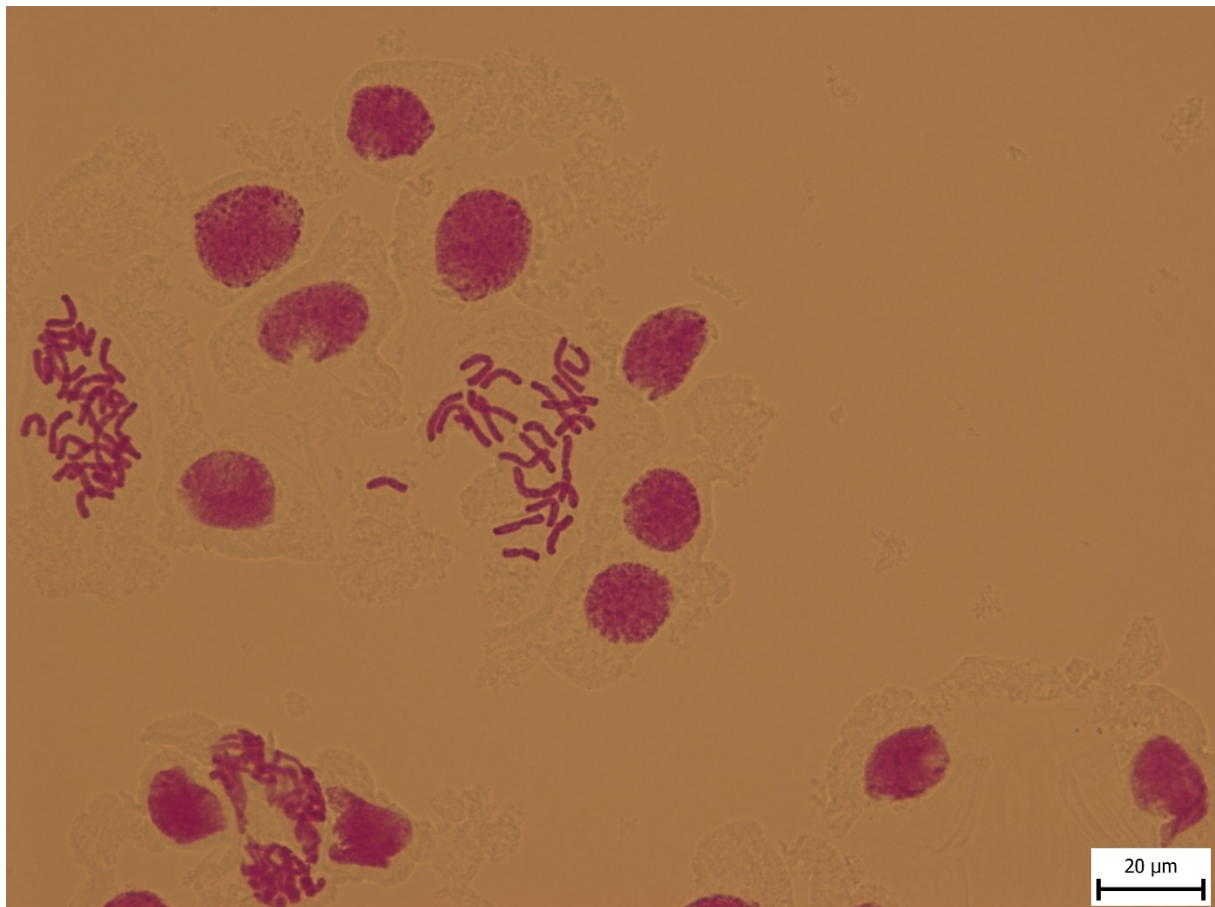


Supplementary material S4

Mitotic metaphase chromosomes of *Allium goumenissanum* from type population (n° 6) and population n° 5 (formerly named as *Allium* sp.). For information on the location of the populations, see Supplementary material S1.

A. Population n° 6 – type populations of *Allium goumenissanum* ($2n = 24$)



B. Population n° 5 – *Allium goumenissanum* ($2n = 24$) (formerly named as *Allium* sp.)

