



Figure S1. Encroached forest and shrubland surrounding the sampled area at Las Niñas. Sampled patches are represented by blue dots. The boundary of the area of sampling is indicated by the black line. Red areas represent forest and shrubland habitats. The yellow area represents land within 40 m of the sampled area boundary. The intersection between the red and yellow areas represents shrub/woodland surface within 40 m from the grove. Approximately 92% of the surface within 40 m from the grove is covered by encroached woodland or scrub.

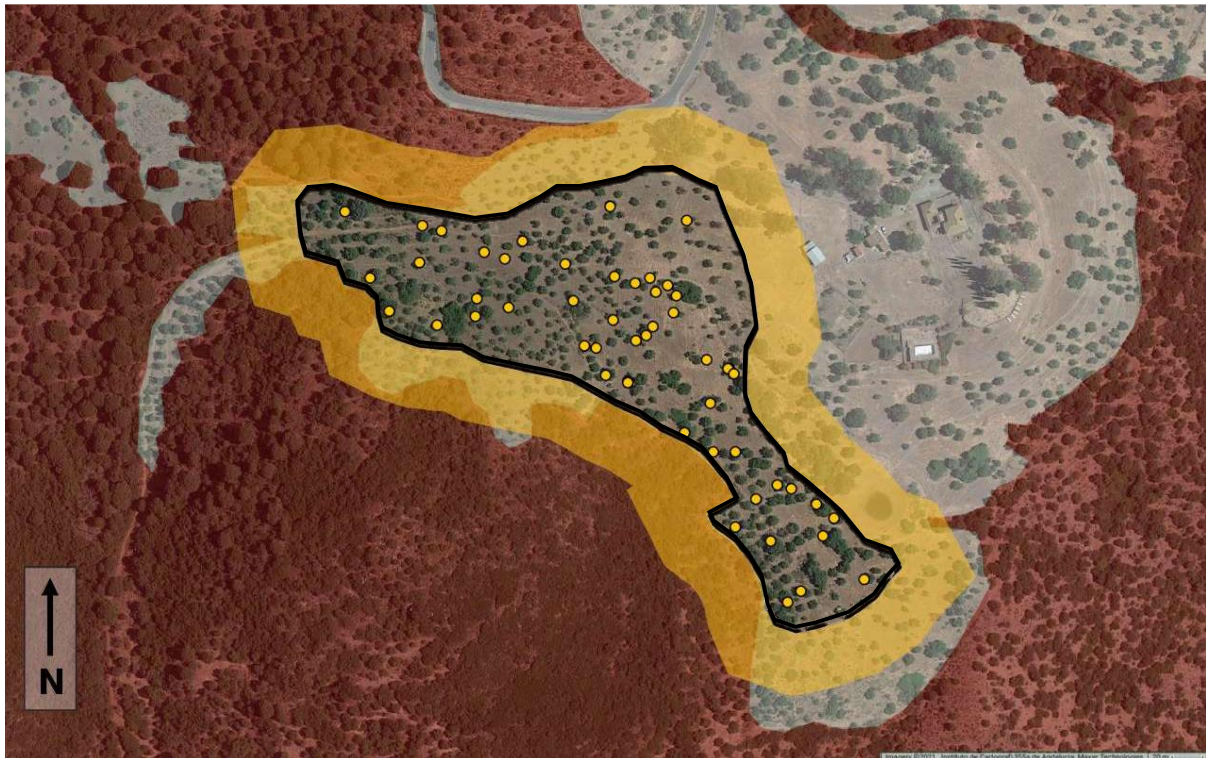


Figure S2. Encroached forest and shrubland surrounding the sampled area at Piquín. Sampled patches are represented by yellow dots. The boundary of the area of sampling is indicated by the black line. Red areas represent forest and shrubland habitats. The yellow area represents land within 40 m of the sampled area boundary. The intersection between the red and yellow areas represents shrub/woodland surface within 40 m from the grove. Approximately 46% of the surface within 40 m from the grove is covered by encroached woodland or scrub.

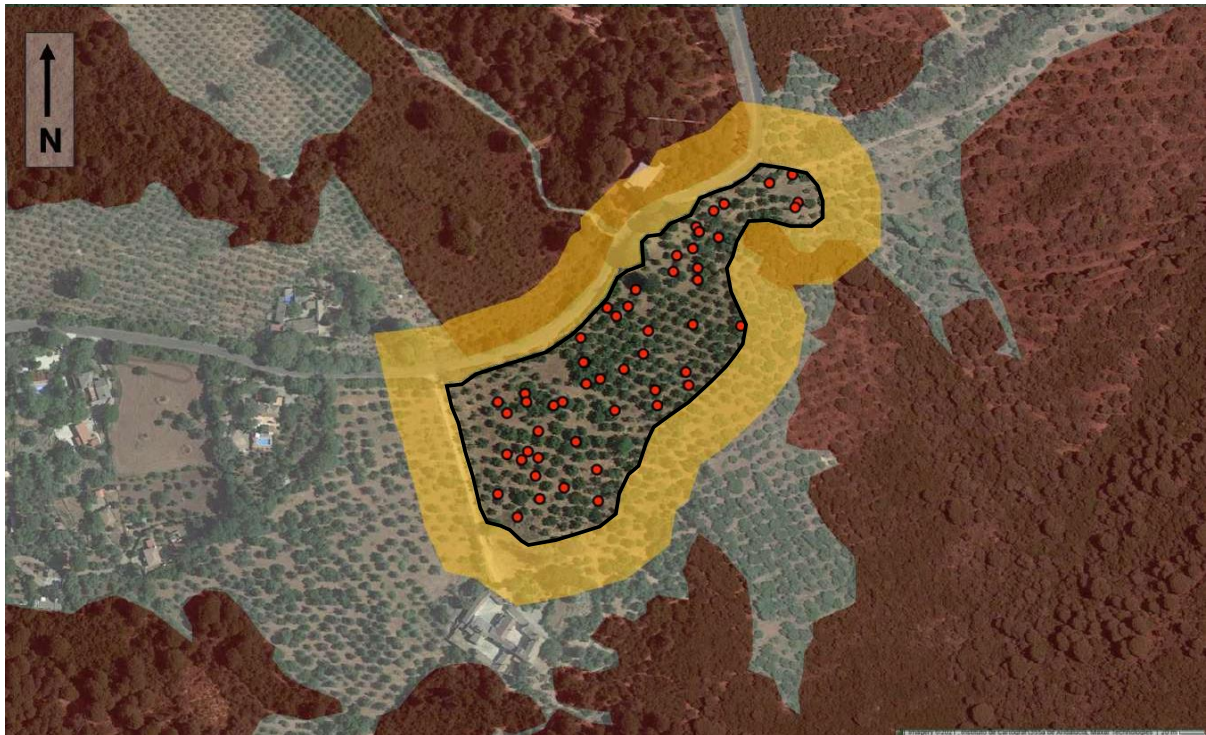


Figure S3. Encroached forest and shrubland surrounding the sampled area at La Soledad.

Sampled patches are represented by red dots. The boundary of the area of sampling is indicated by the black line. Red areas represent forest and shrubland habitats. The yellow area represents land within 40 m of the sampled area boundary. The intersection between the red and yellow areas represents shrub/woodland surface within 40 m from the grove.

Approximately 27% of the surface within 40 m from the grove is covered by encroached woodland or scrub.