

First report of a Middle-Upper Permian magmatism in the SE Iberian Ranges: characterisation and comparison with coeval magmatisms in the western Tethys

Primeros datos del magmatismo pérmico medio-superior del SE de la Cordillera Ibérica: caracterización y comparación con magmatismos contemporáneos del Tethys occidental

M. Lago^{1*}, R. de la Horra^{2,4}, T. Ubide¹, C. Galé¹, B. Galán-Abellán^{2,4}, J.F. Barrenechea^{3,4}, J. López-Gómez^{2,4}, M.I. Benito^{2,4}, A. Arche^{2,4}, J. Alonso-Azcárate⁵, F.J. Luque^{3,4}, M.J. Timmerman⁶

¹ *Departamento de Ciencias de la Tierra, Univ. Zaragoza, C/ Pedro Cerbuna s/n, 50009 Zaragoza, Spain*
mlago@unizar.es; tubide@unizar.es; carlosga@unizar.es

² *Departamento de Estratigrafía, Fac. de Ciencias Geológicas, Univ. Complutense de Madrid, 28040 Madrid, Spain*
abgalan@geo.ucm.es; rhorraba@geo.ucm.es; jlopez@geo.ucm.es; mibenito@geo.ucm.es; aarche@geo.ucm.es

³ *Departamento de Cristalografía y Mineralogía, Fac. de Ciencias Geológicas, Univ. Complutense de Madrid, 28040 Madrid, Spain.* *carrene@geo.ucm.es; jluque@geo.ucm.es*

⁴ *Instituto de Geociencias (CSIC, UCM), C/ José Antonio Novais 2, 28040 Madrid, Spain*

⁵ *Fac. Ciencias del Medio Ambiente, Univ. Castilla-La Mancha, Toledo, Spain.* *jacinto.alonso@uclm.es*

⁶ *Institut für Erd- und Umweltwissenschaften, Univ. Potsdam, Karl-Liebknecht-Str. 24-25, 14476 Potsdam-Golm, Germany.*
timmer@geo.uni-potsdam.de

**corresponding author*

Received: 12/10/2011 / Accepted: 25/05/2012

Abstract

A multiple basic to intermediate sill is reported for the first time in the south-eastern Iberian Ranges. It is composed of several tabular to irregular levels intercalated within the fluvial sediments of the Alcotas Formation (Middle-Upper Permian). The sill could represent the youngest Paleozoic subvolcanic intrusion in the Iberian Ranges.

The igneous rocks are classified as basaltic andesites. They show a subophitic microstructure constituted by plagioclase (An₆₂ – An₆), augite (En₄₈Wo₄₄Fs₇ – En₄₆Wo₃₉Fs₁₅), pseudomorphosed olivine, minor amounts of oxides (magnetite and ilmenite) and accessory F-apatite. According to the mineralogy and whole-rock composition, their geochemical affinity is transitional from subalkaline to alkaline.

Radiometric dating of the sill is not feasible due to its significant alteration. Field criteria, however, suggest an emplacement coeval to the deposition of the Alcotas Formation (Middle-Upper Permian). This hypothesis is supported by the transitional affinity of these rocks, similar to other Middle-Upper Permian magmatisms in the western Tethys, e.g., from the Pyrenees.

Taking into account their isotopic signature ($\epsilon_{\text{Sr}}: -6.8$ to -9.2 ; $\epsilon_{\text{Nd}}: +1.7$ to $+8.3$), an enriched mantle source with the involvement of a HIMU component has been identified. This interpretation is supported by the trace element contents.

Some of these HIMU characteristics have been recognised in the Middle-Upper Permian magmatism of the Central Pyrenees (Anayet Basin) and the High Atlas (Argana Basin). However, none of these source features are shared with other Middle-Upper Permian magmatism of the western Tethys (Catalonian Coastal Ranges, Corsica-Sardinia and southern France), nor with the Lower Permian magmatism of the Iberian Ranges. These differences support the presence of a heterogeneous mantle in the western Tethys during the Permian.

Keywords: sill, peperite, subalkaline to alkaline magmatism, Middle-Upper Permian, Iberian Basin

Resumen

Se describe por primera vez en el sudeste de la Cordillera Ibérica un sill múltiple de carácter básico a intermedio. Está compuesto por varios cuerpos tabulares a irregulares intercalados entre los sedimentos de origen fluvial de la Formación Alcotas (Pérmico Medio-Superior). El sill podría representar la intrusión subvolcánica paleozoica más reciente en la Cordillera Ibérica.

Estas rocas subvolcánicas se clasifican como andesitas basálticas. Muestran una textura subofítica constituida por plagioclasa (An62 – An6), augita (En48Wo44Fs7 – En46Wo39Fs15), pseudomorfos de olivino, minerales opacos (magnetita e ilmenita) y F-apatito accesorio. De acuerdo con su composición mineral y de roca total, su afinidad geoquímica es transicional entre subalcalina y alcalina.

La datación radiométrica del sill no es posible debido a su elevado grado de alteración. No obstante, los criterios de campo sugieren un emplazamiento contemporáneo con el depósito de la Formación Alcotas (Pérmico Medio-Superior). Esta hipótesis está apoyada por la afinidad transicional de estas rocas, similar a otros episodios magmáticos del Pérmico Medio-Superior en el Tethys occidental, como los que afloran en los Pirineos.

Teniendo en cuenta su signatura isotópica (ϵSr : -6.8 a -9.2; ϵNd : +1.7 a +8.3), se propone un origen a partir de un manto enriquecido, con la participación de un componente de tipo HIMU. Esta interpretación está apoyada por sus contenidos en elementos traza.

Algunas de estas características del protolito han sido reconocidas en los magmatismos del Pérmico Medio-Superior del Pirineo (cuenca del Anayet) y del Alto Atlas (cuenca de Argana), pero no son habituales en otros magmatismos de edad Pérmico Medio-Superior del Tethys occidental (Cadenas Costero Catalanas, Córcega-Cerdeña y Sur de Francia), ni en el magmatismo Pérmico Inferior de la Cordillera Ibérica. Estas diferencias apoyan la presencia de un manto heterogéneo en el Tethys occidental durante el Pérmico.

Palabras clave: sill, peperita, magmatismo subalcalino a alcalino, Pérmico medio-superior, Cuenca Ibérica

1. Introduction

The Iberian Basin was developed as an intracratonic basin during the Middle-Upper Permian and underwent several extensional periods during the Mesozoic and Cenozoic, when two major compressive events caused structural inversion leading to the present-day configuration of the Iberian Ranges (Arche and López-Gómez, 1996; Van Wees *et al.*, 1998; Vargas *et al.*, 2009). This configuration shows two almost parallel NW-SE oriented domains: the Aragonian Branch to the north and the Castilian Branch to the south; they are separated by the Cenozoic Calatayud-Teruel Basin (Fig. 1). The Iberian Basin was related to other contemporaneous basins such as the Pyrenean and Catalanian Basins (Arche and López-Gómez, 1996), which experienced similar phases of evolution during their first stages along the Permian and Triassic (e.g., Vargas *et al.*, 2009).

The first main macrosequence filling the Iberian Basin during the Permian is an unconformity-bounded succession consisting of two units: the Boniches Formation and the Alcotas Formation (Fig. 2). This work is focused on the Alcotas Formation, which corresponds to the first period of widespread continental sedimentation in the Iberian Basin and was deposited in a series of inter- or semi-connected, asymmetric half grabens trending NW-

SE. This situation represents an embryonic stage of development of the Iberian Basin (Fig. 3).

During the Middle-Upper Permian, coeval sediments were deposited in isolated pull-apart basins within the western Tethys. For instance, in the Iberian micro-plate the Cantabrian-Pyrenean domain (López-Gómez *et al.*, 2002, 2005) was related to the Bay of Biscay megashear, and the Catalanian-Levantine domain (Arche *et al.*, 2002, 2004) was related to the antithetic shear fault system in the north-eastern edge of the Iberian micro-plate (Christie-Blick and Biddle, 1985). These basins constituted a mosaic of connected or semi-connected rift systems (Fig. 3) that enabled the ascent of mantle-derived magmas. Associated subvolcanic bodies of transitional affinity have been recognised intruding the mentioned coeval sediments in several localities of the Cantabrian-Pyrenean domain (e.g., Lago *et al.*, 2004a) and southern France (Lapierre *et al.*, 1999) or intruding plutonic rocks in the Pyrenees (Gil *et al.*, 2011), the Catalanian Coastal Ranges (Ubide *et al.*, 2010) and Corsica-Sardinia (Traversa *et al.*, 2003).

In this paper we present the first evidence of magmatic bodies emplaced within the fluvial sediments of the Alcotas Formation. The aim of this work is to characterise the petrology and geochemistry of these intrusions and to define their emplacement age.

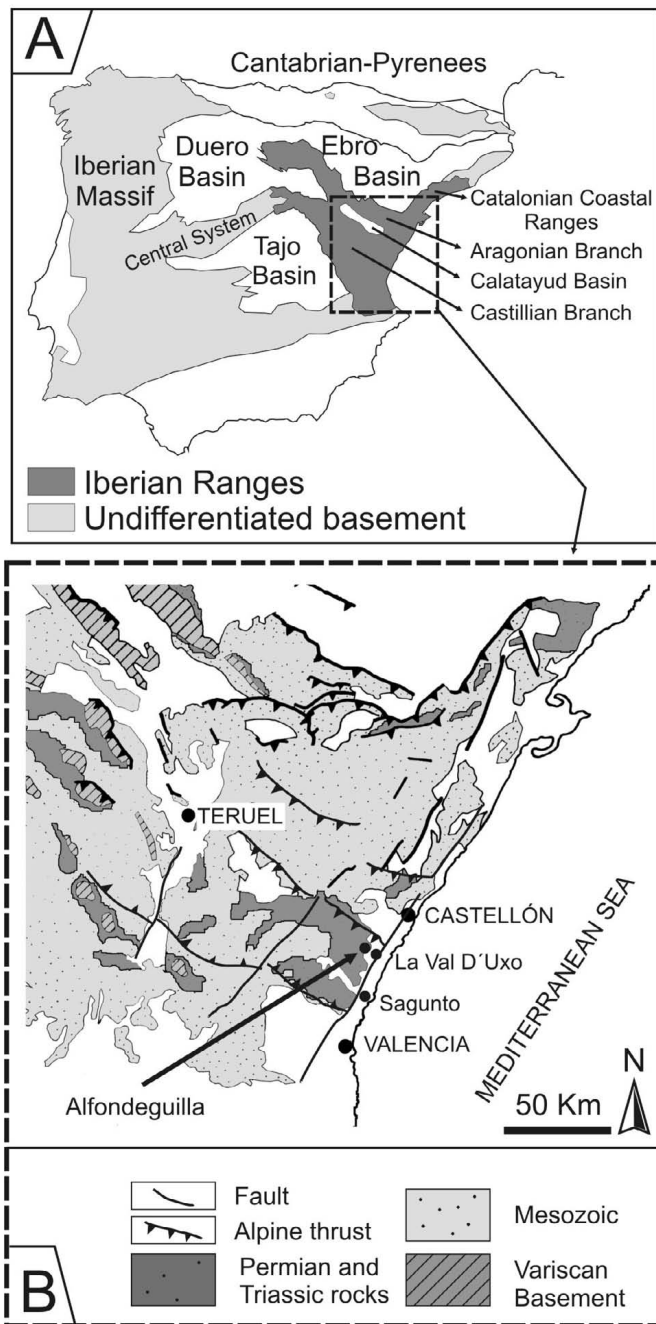


Fig. 1.- A- Main geologic units of the Iberian Peninsula. B- Present-day configuration of the Iberian Ranges and locations cited in the text.

Fig. 1.- A- Principales unidades geológicas de la Península Ibérica. B- Configuración actual de la Cordillera Ibérica y posición de las localidades citadas en el texto.

2. Geological context

The Alcotas Formation crops out for more than 250 km, from Molina de Aragón to the present day Mediterranean coast, in the central and south-eastern domains of the Iberian Ranges, but it is not present in the north-western domain or in the Central System. Based on palynologi-

cal data, its age has been considered Thüringian (Doubringer *et al.*, 1990) or, more recently, late Guadalupian to early Lopingian (Bourquin *et al.*, 2011; De la Horra *et al.*, 2012). Hereafter, we will consider it as Middle-Upper Permian.

The Alcotas Formation reaches 170 m in thickness and consists of red siltstone and claystone beds alternating with lenticular sandstones and sporadic conglomerate lenses. Beds are tens to hundreds metres long and decimetric to metric in thickness (Arche and López-Gómez, 2005; De la Horra *et al.*, 2008); according to these authors, the Alcotas Formation can be divided into three subunits from base to top: the Lower Part, the Middle Part and the Upper Part. The mineral assemblage consists of quartz + feldspar + illite + hematite ± dolomite (Alonso-Azcárate *et al.*, 1997). The Alcotas Formation lies conformably on the Boniches Formation or unconformably on the Variscan basement. It is unconformably overlain by the Early Triassic Valdemeca Unit or by the Cañizar Formation (Fig. 2).

The Lower Part shows abundant channelized sandstone bodies with planar cross-stratification and high avulsion rate embedded in a wide fine-grained floodplain (Arche and López-Gómez 2005). It is interpreted as gravely and sandy braided river deposits in an arid to semi-arid climate with marked seasonality (Benito *et al.*, 2005; De la Horra *et al.*, 2008).

The Middle Part consists of mudstones and siltstones with interbedded thin bodies of sandstone with epsilon cross-stratification littered by comminuted plant remains. Preserved plant remains and tree trunks indicate periods of humid conditions (Diéguez *et al.*, 2007). It is interpreted as a transition from distal sandy braided rivers to high sinuosity meandering rivers occurring gradually yet rapidly (Arche and López-Gómez, 2005).

The Upper Part consists of siltstones with intercalated thin sandstone bodies, where neither paleosols nor macro- or micro-flora has been found. Sandstone bodies contain planar cross-stratification and current ripples. It is interpreted as very low-energy sandy braided river system with high avulsion rate related to the lack of vegetated cover (Arche and López-Gómez, 2005).

Six magmatic levels have been identified intruding the Alcotas Formation in the eastern outcrops of the unit, close to the Alfondeguilla village (Castellón province, Fig. 1). The Alfondeguilla section shows an incomplete sedimentary succession due to different fault displacements related to Alpine tectonics. In spite of this, a succession of 64 m is well exposed (Fig. 4; UTM: 30S 0734751 4415013). This section corresponds mostly to the Middle and Upper Parts of the Alcotas Formation. The magmatic levels intrude the Middle and Upper Parts of this unit.

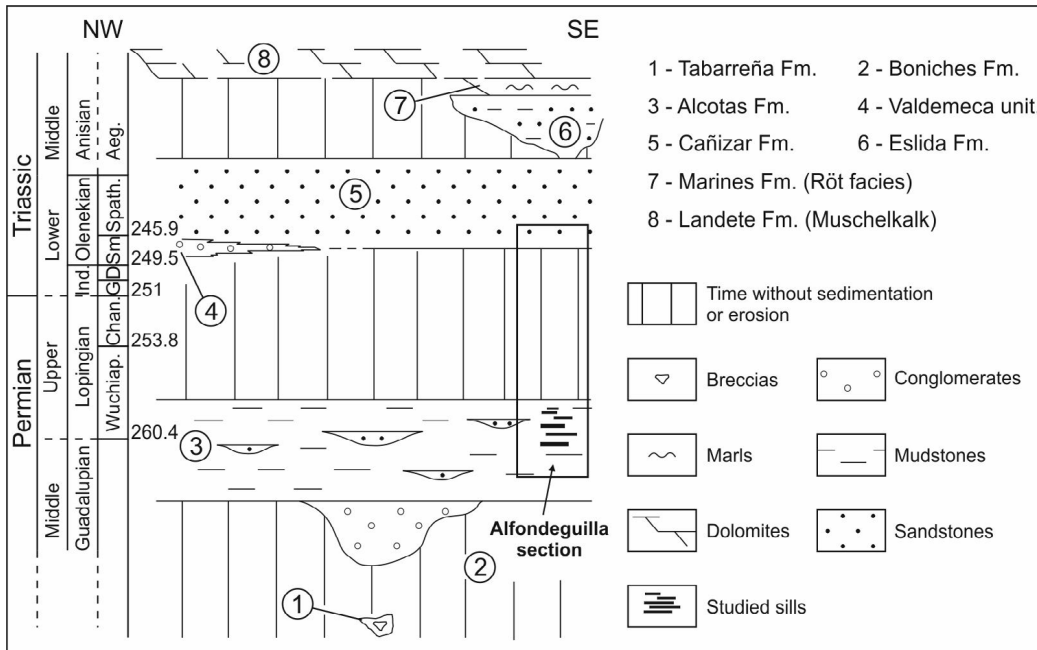


Fig. 2.- Scheme of the Permian and Triassic sedimentary successions in the SE Iberian Ranges and associated unconformities and hiatuses. The studied igneous rocks are intercalated into the Alcotas Formation.

Fig. 2.- Esquema de las sucesiones de rocas del Pérmico y Triásico en el SE de la Cordillera Ibérica y las discordancias e hiatos asociadas. Las rocas ígneas estudiadas aparecen intercaladas en la Formación Alcotas.

The studied area was located at the junction of two major fracture zones during the Permian: the Iberian (NW-SE trending) and the Catalonian-Levantine (NNE-SSW) (Arche and López-Gómez, 1999; Fig. 3). The latter zone, located along the eastern margin of the Iberian microplate, was developed in a different extensional domain that extended from Provence down to the Levantine area, starting the process of separation of the future small insular blocks to the east (Arche *et al.*, 2002).

3. Field observations

Six igneous levels have been recognised in the Alfonso de Guilla section; we have named them ALFx1 to ALFx6 from top to bottom in the stratigraphical sequence (Fig. 4). The levels are grey coloured, with a brownish hue at the most altered areas. They present an average NE-SW strike and are subhorizontal (042, 06NW – 056, 20SE), occurring along sedimentary bedding planes. They show a tabular to irregular shape (Fig. 5A) and crop out for up to 160 m. Their thickness varies from 20 cm to more than 3 m and it generally decreases towards the upper levels (Fig. 4). The levels are vertically separated by 1.5 to 3.6 m of sedimentary rocks and are closer to each other towards the upper levels. Both the igneous levels and the sedimentary country-rocks are affected by a network of fractures with two main directions: NNE-SSW (020, 90) and ESE-WNW (115, 80SE). Some fractures are filled with calcite.

In detail, the contact of the igneous levels and the sedimentary country-rocks is generally sharp but wavy (Fig. 5A). Irregular contacts are characterised by smooth,

ovoid or elongate, cm-scale undulations that curve outwards from intrusive margins and are separated by cusped, sediment-filled invaginations. According to Befus *et al.* (2009), these structures can be considered as billows (Fig. 5A). Besides, irregular, cm-scale fragments of structure-less sediments are frequently observed inside the intrusions (Fig. 5B-D), close to their margins. Locally, in the ALFx4 and especially ALFx6 levels (Fig. 4), which are the thickest, we have recognised igneous rocks intermixed with the country-rock sediments: rounded, cm-scale globules of igneous rock surrounded by sediments, partly replace the upper margin of this intrusion (Fig. 5E). These structures are considered peperites as defined by White *et al.* (2000) and Skilling *et al.* (2002).

The igneous levels develop chilled margins with frequent, rounded, calcite-filled vesicles (Fig. 5C-E). The vesicles are sometimes elongated and even coalesced, oriented parallel to the sill margin. They are millimetric to centimetric in size and their proportion is greater at the thicker, stratigraphically lower levels (ALFx4 to ALFx6), becoming scarcer towards the upper levels. The igneous rocks are rather homogenous, both throughout the vertical of the levels and along their length. They usually present non oriented mm-sized phenocrysts, visible to the naked eye; most of them are red-coloured, altered olivine crystals.

4. Samples and methods

Excepting ALFx1, which shows the highest alteration degree, the rest of the igneous levels (Fig. 4) were sampled for petrological and geochemical studies. The sam-

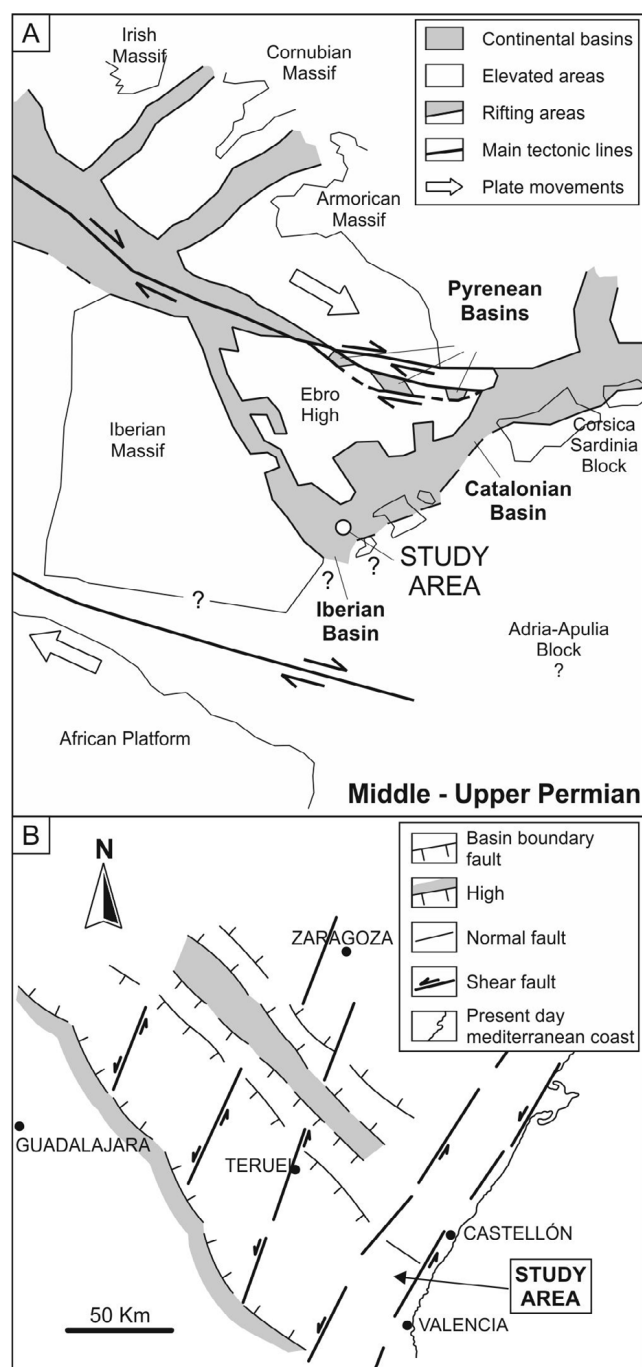


Fig. 3.- A- Location and paleogeographical reconstruction of the Iberian micro-plate and the western Tethys area for the Middle-Upper Permian showing the main rift systems and the connections between them. The location of the studied section is shown. B- Paleotectonic sketch of the Iberian Basin during the Upper Permian – Early Triassic and reconstruction of the extensional faults during the Upper Permian. Note the two main NW–SE and SW–NE thrust systems. Modified from Arche and López-Gómez (1996).

Fig. 3.- A- Localización y reconstrucción paleogeográfica de la microplaca de Iberia y el área del Tethys occidental para el Pérmico Medio-Superior mostrando los principales sistemas de rift y las conexiones entre ellos. Se localiza la sección estudiada. B- Esquema paleotectónico de la Cuenca Ibérica durante el Pérmico Superior – Triásico inferior y reconstrucción de las fallas extensionales durante el Pérmico Superior. Nótese los dos sistemas de cabalgamientos principales NW–SE y SW–NE. Modificado de Arche and López-Gómez (1996).

ples were named after the igneous level; suffixes –A, –B, etc. denote different samples from the same igneous level.

Several thin sections were studied from each sample. Eight polished thin sections were selected for mineral analyses. Mineral compositions were determined by electron microprobe at the *Centro Nacional de Microscopía electrónica* of the Complutense University (Madrid, Spain), using a JEOL JZA-8900 M electron microprobe equipped with four wavelength dispersive spectrometers. Analyses were performed using an accelerating voltage of 15 kV and an electron beam current of 20 nA, with a beam diameter of 5 μm . Elemental counting times were 10 s on the peak and 5 s on each of two background positions. Analyses were corrected for electronic interactions using a ZAF procedure.

Nine samples were selected for whole-rock analyses. They were crushed with a manganese steel jaw-crusher, milled with a Rechts Pulverisette agate mortar and sieved to < 53 μm in the Complutense University (Madrid, Spain). Major and trace element concentrations were determined in the *Faculty of Environmental Sciences* of the Castilla-La Mancha University (Toledo, Spain). The samples were analysed by an ICP-AES ICAP 6500 ThermoElectron for major elements and an ICP-MS XThermoElectron Series II for trace elements. Solutions were prepared from 0.25 g of each sample fluxed with 0.5 g of Li-metaborate and dissolved in 100 ml HNO_3 1N and 3 drops of HF. Five standard reference materials provided by the US Geological Survey were used for external calibration; internal calibration of the equipment was carried out before the measurements.

Five samples were selected for isotope analyses. $^{87}\text{Rb}/^{86}\text{Sr}$, $^{87}\text{Sr}/^{86}\text{Sr}$, $^{147}\text{Sm}/^{144}\text{Nd}$ and $^{143}\text{Nd}/^{144}\text{Nd}$ isotopic ratios were determined at the *Geochronology and Isotope Geochemistry Centre* of the Complutense University (Madrid, Spain) on an automated Multicollector VG Sector 54 Mass Spectrometer. Samples were first decomposed in 5 ml HF and 2 ml HNO_3 in Teflon digestion bombs heated for 48 hours at 120 $^\circ\text{C}$ and finally in 2.5N HCl. Concentrations of Rb and Sr as well as Rb/Sr atomic ratios were determined by X-ray fluorescence spectrometry at the *X-Ray Diffraction Centre* of the Complutense University (Madrid, Spain), following the methods of Pankhurst and O'Nions (1973). Sm and Nd were determined by isotope dilution using spikes enriched in ^{149}Sm and ^{150}Nd . Ion exchange techniques were used to separate the elements for isotopic analysis. Sr and REE were separated using a Dovex AG-50x12 cation exchange resin. Errors are quoted throughout as two standard deviations from measured or calculated values. Analytical uncertainties are estimated to be 0.01% for $^{87}\text{Sr}/^{86}\text{Sr}$, 0.006% for $^{143}\text{Nd}/^{144}\text{Nd}$, 1% for $^{87}\text{Rb}/^{86}\text{Sr}$, and 0.1% $^{147}\text{Sm}/^{144}\text{Nd}$.

Replicate analyses of the NBS-987 Sr-isotope standard yielded an average $^{87}\text{Sr}/^{86}\text{Sr}$ ratio of 0.710262 ± 0.00007 (n=7) and La Jolla Nd-isotope standard yielded an average $^{143}\text{Nd}/^{144}\text{Nd}$ ratio of 0.511845 ± 0.00003 (n=12).

$^{40}\text{Ar}/^{39}\text{Ar}$ dating was carried out at the *Institut für Erd- und Umweltwissenschaften* (Potsdam University). Although plagioclase was the only K-rich phase in the rocks, it could not be used given the small size of the crystals. Therefore, leached and unleached whole-rock

samples were prepared. However, no reliable ages were obtained from the experiments (neither plateaus nor isochrones could be defined), probably due to the high degree of alteration of the samples.

Data treatment was performed with “ad-hoc” built spreadsheets. Mineral abbreviations in the tables and figures are according to Whitney and Evans (2010).

5. Petrography

The studied samples present a primary mineral assemblage composed of plagioclase (70-80 vol. %), clinopyroxene (3-15 vol. %), pseudomorphosed olivine, opaque minerals (3-7 vol. %) and accessory apatite. They generally show a subophitic to glomeroporphyritic microstructure (Fig. 6), defined by mm-sized prismatic plagioclase crystals. Olivine constitutes subidiomorphic phenocrysts completely replaced by secondary assemblages including chlorite and opaque minerals. Clinopyroxene and primary opaque minerals appear as subidiomorphic microphenocrysts. Microcrysts (mainly plagioclase and opaque minerals) are widely altered to calcite and chlorite and vesicles are filled with calcite. ALFx5 and ALFx6 levels show the highest contents in olivine and clinopyroxene.

Two xenocrysts have been recognised in the studied samples. ALFx3 contains a rounded quartz xenocryst, 6 mm long, unzoned, which presents a resorption rim of 0.4 mm. Besides, ALFx5 shows an andalusite xenocryst (Fig. 6B), 1 cm long, also unzoned, with a corroded and darkened rim.

6. Geochemistry

6.1. Mineral chemistry

Mineral compositions were determined for clinopyroxene, plagioclase, opaque minerals, apatite and the andalusite xenocryst (Table 1). Olivine is completely replaced by secondary minerals in all the samples, so its original composition could not be determined.

Clinopyroxene compositions were measured in samples ALFx5 and ALFx6. According to Morimoto *et al.* (1988), clinopyroxene is classified as augite (Fig. 7A, Table 1). Clinopyroxene compositions do not show clear differentiation trends with decreasing mg*: $\text{Mg}/(\text{Mg}+\text{Fe}^{2+}+\text{Fe}^{3+}+\text{Mn})$ per formula unit, p.f.u., where Fe^{3+} is calculated according to Droop (1987). SiO_2 values are high (50.74-52.95 wt. %), Al_2O_3 values are low (1.16-3.78 wt. %), TiO_2 values are moderate (0.54-1.06 wt. %), Na_2O are low (0.18-0.51 wt. %) and Al^{VI} p.f.u. values are low (up to 0.06). The compositions plot in the subalkaline

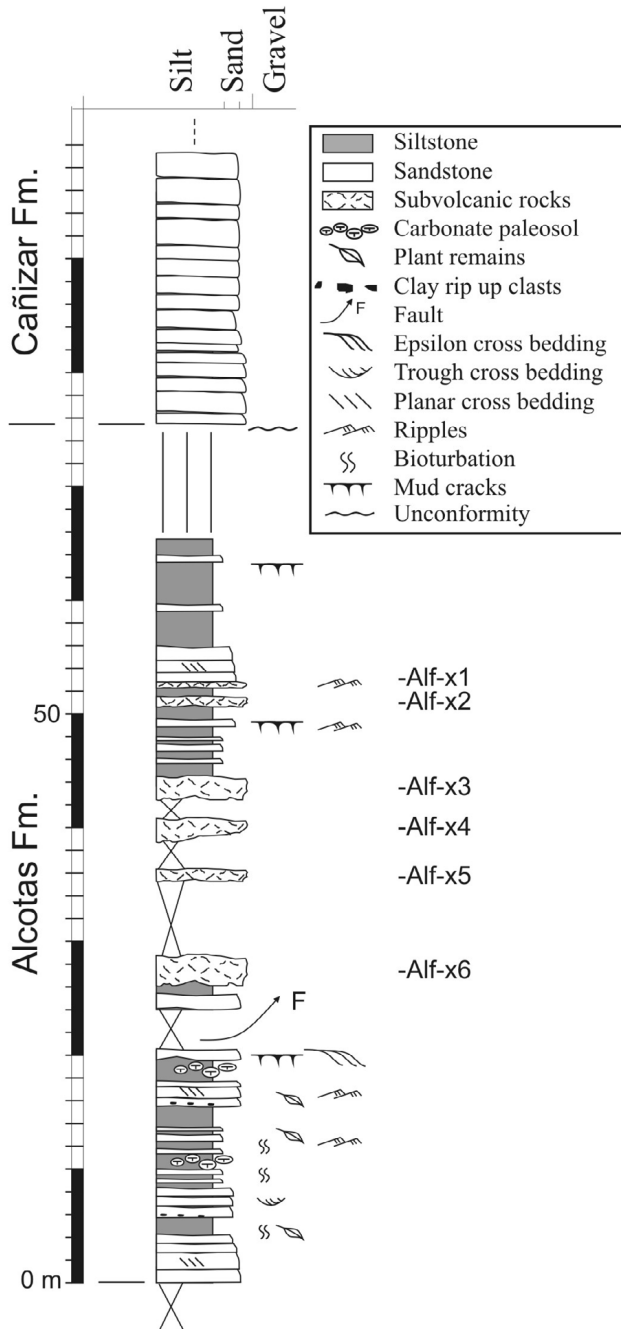


Fig. 4.- Section of the Alcotas Formation at the Alfondeguilla area (Castellón province).

Fig. 4.- Columna estratigráfica de la Formación Alcotas en la zona de Alfondeguilla (Provincia de Castellón).

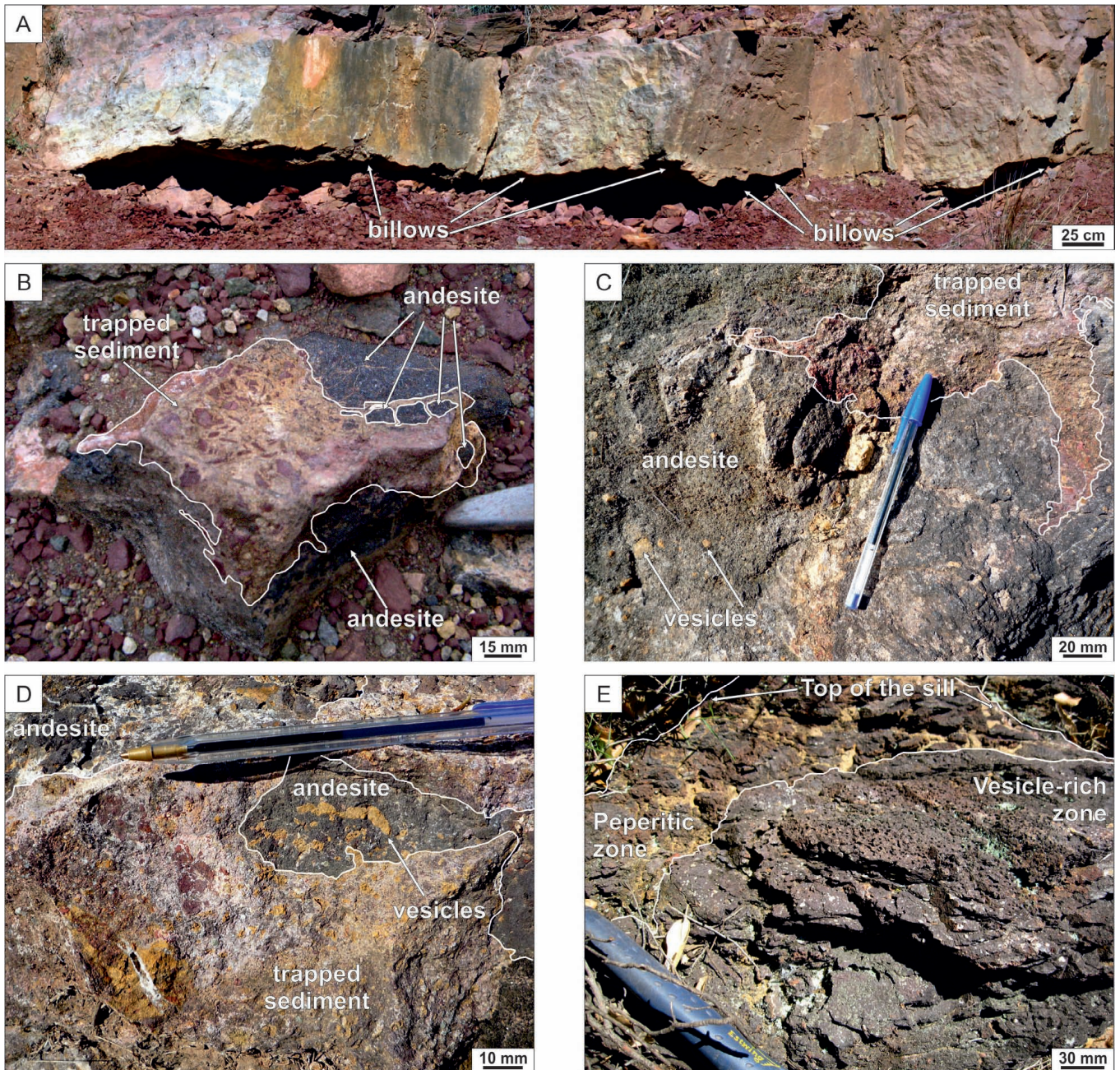


Fig. 5.- Field photographs of the igneous levels in the Alfondeguilla section. A- ALFx5 level with irregular (billowed) margins. B- Trapped sediments inside a block of andesite. C- Vesicles and trapped sediments in level ALFx6. D- Vesicles and trapped sediments in level ALFx5. E- Upper margin of the ALFx4 level, with peperites and vesicles.

Fig. 5.- Fotografías de campo de los niveles ígneos de la columna de Alfondeguilla. A- Nivel ALFx5, con contactos irregulares (“billows”). B- Sedimentos atrapados en un bloque suelto de andesita. C- Vesículas y sedimentos atrapados en el nivel ALFx6. D- Vesículas y sedimentos atrapados en el nivel ALFx5. E- Contacto superior del nivel ALFx4, en el que se desarrollan peperitas y las vesículas son abundantes.

field defined by Leterrier *et al.* (1982; Fig. 7B).

Plagioclase was analysed in samples ALFx2, ALFx4, ALFx5 and ALFx6, yielding compositions which vary from An_{65} to An_6 (Table 1). Most of them are classified as labradorite and andesine (Fig. 7C). As their content in the anorthite molecule decreases, they become progressively enriched in the orthoclase molecule. Plagioclase from ALFx2 shows the most Ca-rich compositions (An_{65} – An_{49}), whilst plagioclase from ALFx6 is the most evolved

(An_{59} – An_6).

Opaque minerals from ALFx2, ALFx4, ALFx5 and ALFx6 are classified as ilmenite. Their compositions vary from 46.61 to 62.63 wt. % TiO_2 and from 32.72 to 44.81 wt. % FeO . Apatite (analysed in ALFx2 and ALFx5) is F-rich. The andalusite xenocryst displays a homogeneous composition (SiO_2 36.24–36.91 and Al_2O_3 62.38–62.95 wt. %), with FeO_1 contents up to 0.27 wt. %.

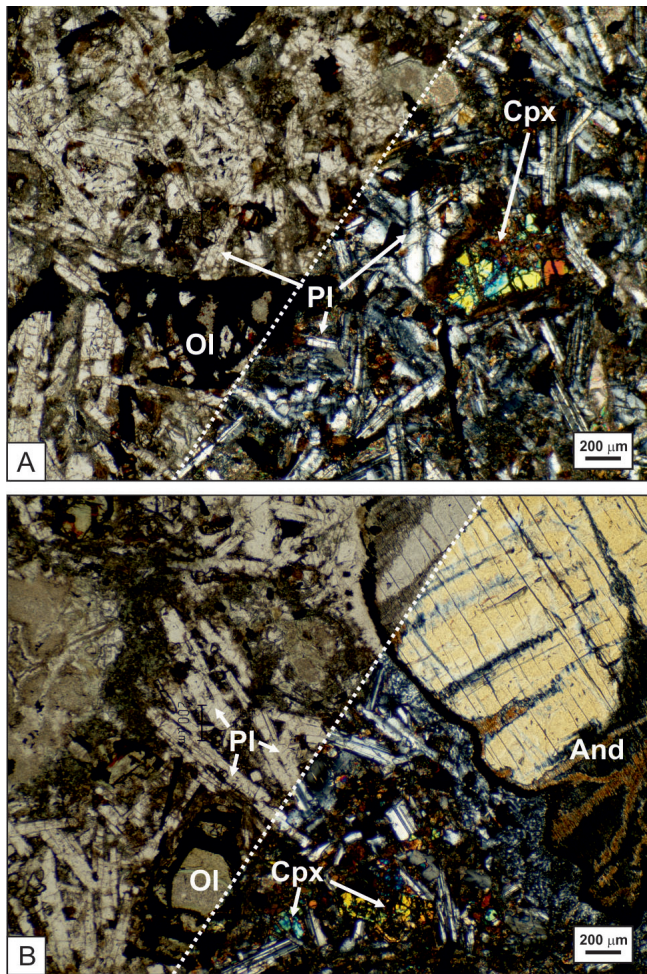


Fig. 6.- Thin section photomicrographs (plane- and cross-polarised transmitted light). A- ALFx5 level, showing the predominant subophitic microstructure defined by plagioclase prismatic crystals, with pseudomorphed olivine and clinopyroxene microphenocrysts set in a fine grained groundmass. B- Andalusite xenocryst in ALFx5 level.

Fig. 6.- Microfotografías en lámina delgada (luz transmitida con polarización paralela y cruzada). A- Nivel ALFx5, mostrando textura subofítica definida por cristales prismáticos de plagioclasa, con pseudomorfos de olivino y microfenocristales de clinopiroxeno en una mesostasia de tamaño cristalino fino. B- Xenocristal de andalu-cita en el nivel ALFx5.

6.2. Whole-rock chemistry

Three of the intrusions (ALFx2, ALFx5 and ALFx6) were selected for whole-rock analyses, including major and trace elements and Sr and Nd isotopes; samples from ALFx3 and ALFx4 were rejected due to their high alteration degree.

All the rocks show similar compositions. According to their elemental concentrations, they are classified as low-K basaltic andesites (Fig. 8A) and alkali basalts (Fig. 8B). The calculated CIPW norm indicates they are quartz-, hypersthene- and corundum-normative. The presence of hypersthene and corundum in the norm indicates a high Al_2O_3 content in the magma, which is also recognised in

the rock analyses (Al_2O_3 14.33-14.74 wt. %, Table 2), in agreement with the high modal proportion of plagioclase in these rocks.

The variation of Mg# (molar ratio $MgO/(MgO+FeO)$) vs. other meaningful elements (Fig. 9) draws poorly defined differentiation trends, mainly due to the high resemblance among the different samples. In detail, ALFx5 presents the highest Mg# values, representing the least evolved level. However, none of the analysed samples (Table 2) presents compositional features typical of primitive magmas in equilibrium with their mantle source (in such cases $MgO > 11$ wt. %, $Mg\# > 0.6-0.7$, $Cr > 500-1000$ ppm and $Ni > 200-500$ ppm; Frey *et al.*, 1978). On the other hand, ALFx2 shows the lowest concentrations in TiO_2 , P_2O_5 and Na_2O and the highest CaO values (Fig. 9A-E), in agreement with the higher anorthite contents in its plagioclase (Fig. 7C). Indeed, ALFx5 and ALFx6 can be compositionally grouped (Fig. 9), in agreement with their higher proportion of ferromagnesian minerals (olivine and clinopyroxene) compared to ALFx2. Loss On Ignition (LOI) values (Table 2) are higher for ALFx2 than for ALFx5 and ALFx6, probably related to the high alteration degree shown by plagioclase, more abundant in ALFx2. The primitive mantle-normalised incompatible ratios $(La/Lu)_N$ are moderately high (10.12–13.30; Table 2) and decrease with Mg# (Fig. 9F).

Primitive mantle-normalised multielemental patterns are rather similar to each other (Fig. 10). The most incompatible elements are up to 100 times enriched over primitive mantle. The samples present Rb-Ba and K negative anomalies and Nb-Ta enrichments. Furthermore, Sm and Ti are slightly depleted, P shows a small positive anomaly and Pb displays a relative variability. These features are very similar to those of enriched mantle sources with a HIMU component (Hoffman, 1997).

Isotopic initial ratios of $^{87}Sr/^{86}Sr$ and $^{143}Nd/^{144}Nd$ (Table 2) vary from 0.7035 to 0.7037 and from 0.5124 to 0.5127, respectively. These ratios are Nd-enriched (ϵNd ranges from +1.7 to +8.3) and Sr-depleted (ϵSr ranges from -6.8 to -9.2) compared to the Bulk Silicate Earth (BSE) (Fig. 11). These values are similar to the enriched HIMU mantle component of Zindler and Hart (1986). The calculated T-depleted mantle (DM) model ages are between 0.37 and 0.98 Ga. This wide range of model ages is related to the variability in the $^{143}Nd/^{144}Nd$ values.

7. Discussion

7.1. Emplacement of the magma

The different igneous levels recognised in the Alfundeguilla section emplaced along sedimentary bedding

TABLE 1.- REPRESENTATIVE MAJOR ELEMENT COMPOSITION (EXPRESSED AS WT.% OF CPX-PL-OPQ-AP-AND FROM THE STUDIED SILLS.

Min. Sill	Cpx		Cpx		Cpx		Cpx		Cpx		Pl		Pl		Pl		Pl		Opq		Opq		Ap		And			
	ALFx6	ALFx5	ALFx6	ALFx5	ALFx6	ALFx5	ALFx6	ALFx5	ALFx6	ALFx5	ALFx6	ALFx5	ALFx6	ALFx5	ALFx6	ALFx5	ALFx6	ALFx5	ALFx6	ALFx5	ALFx6	ALFx5	ALFx6	ALFx5	ALFx6	ALFx5		
SiO ₂	51,43	51,69	52,39	52,56	52,95	52,95	51,76	51,76	51,76	51,76	53,15	53,87	54,39	56,91	57,49	65,95	65,95	65,95	65,95	65,95	65,95	65,95	65,95	65,95	65,95	65,95	65,95	
TiO ₂	0,75	0,77	0,54	0,59	0,59	0,59	1,06	1,06	1,06	1,06	0,08	0,12	0,11	0,12	0,16	0,09	0,09	0,09	0,09	0,09	0,09	0,09	0,09	0,09	0,09	0,09	0,09	
Al ₂ O ₃	2,94	2,61	1,66	1,67	1,52	1,52	2,54	2,54	2,54	2,54	28,72	28,82	28,26	26,56	25,98	19,86	19,86	19,86	19,86	19,86	19,86	19,86	19,86	19,86	19,86	19,86	19,86	
Cr ₂ O ₃	0,96	0,80	0,59	0,48	0,44	0,44	0,59	0,59	0,59	0,03	0,03	0,02	0,04	0,03	0,06	0,05	0,05	0,05	0,05	0,05	0,05	0,05	0,05	0,05	0,05	0,05	0,05	
MgO	17,10	16,67	17,97	18,34	18,79	18,79	16,27	16,74	16,74	16,59	0,15	0,14	0,06	0,08	0,04	0,46	0,46	0,46	0,46	0,46	0,46	0,46	0,46	0,46	0,46	0,46	0,46	
FeO ^T	4,97	5,14	5,94	6,40	6,77	6,77	6,13	8,19	9,47	9,47	0,48	0,41	0,45	0,40	0,49	0,63	0,63	0,63	0,63	0,63	0,63	0,63	0,63	0,63	0,63	0,63	0,63	
NiO	0,09	0,02	0,00	0,04	0,05	0,05	0,00	0,01	0,05	0,05	0,09	0,00	0,00	0,01	0,03	0,00	0,00	0,00	0,00	0,00	0,00	0,00	0,00	0,00	0,00	0,00	0,00	
MnO	0,14	0,00	0,11	0,21	0,20	0,20	0,10	0,21	0,21	0,00	0,00	0,00	0,06	0,00	0,00	0,00	0,00	0,00	0,00	0,00	0,00	0,00	0,00	0,00	0,00	0,00	0,00	
CaO	21,35	21,46	20,42	20,07	18,94	18,94	20,53	20,95	19,67	19,67	12,79	11,68	11,47	8,99	8,24	1,30	1,30	1,30	1,30	1,30	1,30	1,30	1,30	1,30	1,30	1,30	1,30	
Na ₂ O	0,29	0,27	0,23	0,18	0,19	0,19	0,31	0,26	0,24	0,24	4,33	4,62	5,18	6,35	6,73	7,39	7,39	7,39	7,39	7,39	7,39	7,39	7,39	7,39	7,39	7,39	7,39	
K ₂ O	0,00	0,00	0,00	0,00	0,00	0,00	0,00	0,00	0,02	0,02	0,21	0,24	0,35	0,52	0,54	4,62	4,62	4,62	4,62	4,62	4,62	4,62	4,62	4,62	4,62	4,62	4,62	
P ₂ O ₅	0,00	0,00	0,00	0,00	0,00	0,00	0,00	0,00	0,00	0,00	0,00	0,00	0,00	0,02	0,04	0,00	0,00	0,00	0,00	0,00	0,00	0,00	0,00	0,00	0,00	0,00	0,00	
F	0,00	0,00	0,00	0,00	0,00	0,00	0,05	0,00	0,00	0,00	0,00	0,00	0,00	0,02	0,02	0,00	0,00	0,00	0,00	0,00	0,00	0,00	0,00	0,00	0,00	0,00	0,00	
Cl	0,00	0,00	0,00	0,00	0,00	0,00	0,00	0,00	0,00	0,00	0,02	0,00	0,00	0,00	0,00	0,00	0,00	0,00	0,00	0,00	0,00	0,00	0,00	0,00	0,00	0,00	0,00	
Total	100,00	99,44	99,84	100,53	100,44	100,44	99,31	99,83	100,24	100,24	100,03	99,90	100,37	100,00	99,82	100,36	100,36	100,36	100,36	100,36	100,36	100,36	100,36	100,36	100,36	100,36	100,36	
Structural formulae																												
Si	1,88	1,90	1,92	1,91	1,92	1,92	1,92	1,87	1,91	1,91	2,42	2,44	2,46	2,56	2,59	2,93	2,93	2,93	2,93	2,93	2,93	2,93	2,93	2,93	2,93	2,93	2,93	2,93
Ti	0,02	0,02	0,01	0,02	0,02	0,02	0,03	0,03	0,03	0,03	0,00	0,00	0,00	0,00	0,01	0,00	0,00	0,00	0,00	0,00	0,00	0,00	0,00	0,00	0,00	0,00	0,00	
Al	0,13	0,11	0,07	0,07	0,07	0,07	0,11	0,07	0,06	0,06	1,54	1,54	1,51	1,41	1,38	1,04	1,04	1,04	1,04	1,04	1,04	1,04	1,04	1,04	1,04	1,04	1,04	
Cr	0,03	0,02	0,02	0,01	0,01	0,01	0,02	0,00	0,00	0,00	0,00	0,00	0,00	0,00	0,00	0,00	0,00	0,00	0,00	0,00	0,00	0,00	0,00	0,00	0,00	0,00	0,00	
Mg	0,93	0,92	0,98	0,99	1,02	1,02	0,90	0,92	0,91	0,91	0,01	0,01	0,00	0,00	0,00	0,03	0,03	0,03	0,03	0,03	0,03	0,03	0,03	0,03	0,03	0,03	0,03	
Fe ³⁺	0,07	0,03	0,07	0,08	0,05	0,05	0,00	0,15	0,09	0,09	0,02	0,02	0,02	0,02	0,02	0,02	0,02	0,02	0,02	0,02	0,02	0,02	0,02	0,02	0,02	0,02	0,02	
Fe ²⁺	0,08	0,12	0,11	0,12	0,15	0,15	0,19	0,11	0,20	0,20	0,02	0,02	0,02	0,02	0,02	0,02	0,02	0,02	0,02	0,02	0,02	0,02	0,02	0,02	0,02	0,02	0,02	
Ni	0,00	0,00	0,00	0,00	0,00	0,00	0,00	0,00	0,00	0,00	0,00	0,00	0,00	0,00	0,00	0,00	0,00	0,00	0,00	0,00	0,00	0,00	0,00	0,00	0,00	0,00	0,00	
Mn	0,00	0,00	0,00	0,01	0,01	0,01	0,00	0,01	0,01	0,01	0,00	0,00	0,00	0,00	0,00	0,00	0,00	0,00	0,00	0,00	0,00	0,00	0,00	0,00	0,00	0,00	0,00	
Ca	0,84	0,85	0,80	0,78	0,74	0,74	0,81	0,83	0,78	0,78	0,62	0,57	0,56	0,43	0,40	0,06	0,06	0,06	0,06	0,06	0,06	0,06	0,06	0,06	0,06	0,06	0,06	
Na	0,02	0,02	0,02	0,01	0,01	0,01	0,02	0,02	0,02	0,02	0,38	0,41	0,45	0,55	0,59	0,64	0,64	0,64	0,64	0,64	0,64	0,64	0,64	0,64	0,64	0,64	0,64	
K	0,00	0,00	0,00	0,00	0,00	0,00	0,00	0,00	0,00	0,00	0,01	0,01	0,01	0,03	0,03	0,26	0,26	0,26	0,26	0,26	0,26	0,26	0,26	0,26	0,26	0,26	0,26	
Total	4,00	4,00	4,00	4,00	4,00	4,00	4,00	4,00	4,00	4,00	5,01	4,99	5,02	5,02	5,02	4,99	4,99	4,99	4,99	4,99	4,99	4,99	4,99	4,99	4,99	4,99	4,99	
Classif.	Aug	Aug	Aug	Aug	Aug	Aug	Aug	Aug	Aug	Aug	Labrad.	Labrad.	Labrad.	Andes.	Andes.	Anorth.	Anorth.	Anorth.	Anorth.	Anorth.	Anorth.	Ilm	Ilm	Ilm	F-Ap	F-Ap		
	En48 Wo43	En48 Wo44	En50 Wo41	En50 Wo40	En52 Wo37	En47 Wo43	En46 Wo41	En46 Wo39	En46 Wo39	En46 Wo39	An61 Or1	An57 Or1	An54 Or2	An43 Or3	An39 Or3	An6 Or27	An6 Or27	An6 Or27	An6 Or27	An6 Or27	An6 Or27							
mg*	0,86	0,85	0,84	0,83	0,83	0,82	0,78	0,78	0,75	0,75																		

FeO^T: total Fe expressed as FeO; Fe³⁺ calculated according to Droop (1987), for Cpx and Opq; mg*: Mg/(Mg+Fe²⁺+Fe³⁺+Mn) per formula unit, p.f.u., for Cpx.

Table 1.- Representative major element composition (expressed as wt.%) of clinopyroxene, plagioclase, opaque minerals and andalusite from the Alfondeguilla igneous rocks. Structural formulae calculated to 6, 8, 3 and 5 oxygens, respectively.

Tabla 1.- Composiciones en elementos mayores representativas (expresadas en % en peso) de clinopiroxeno, plagioclasa, opacos y andalucita de las rocas ígneas de Alfondeguilla. Fórmulas estructurales calculadas a 6, 8, 3 y 5 oxígenos, respectivamente.

TABLE 2.- WHOLE ROCK AND ISOTOPIC Sr-Nd COMPOSITION OF ALFONDEGUILLA SILLS.

Sample	ALFx2A	ALFx2B	ALFx2C	ALFx2D	ALFx5A	ALFx5B	ALFx5C	ALFx6A	ALFx6B
SiO ₂	51,77	52,91	52,85	52,26	54,44	54,07	54,62	54,43	54,51
TiO ₂	1,71	1,61	1,68	1,67	1,78	1,74	1,74	1,74	1,74
Al ₂ O ₃	14,33	14,53	14,62	14,43	14,73	14,55	14,74	14,52	14,58
Fe ₂ O ₃	9,85	10,84	9,94	10,04	9,91	10,20	10,78	11,18	11,37
MnO	0,09	0,09	0,09	0,10	0,06	0,10	0,09	0,08	0,11
MgO	6,57	6,22	6,57	6,39	7,39	7,31	6,92	6,65	7,02
CaO	6,91	6,78	6,74	6,87	4,74	6,39	6,20	5,59	6,49
Na ₂ O	2,46	2,52	2,61	2,58	3,29	3,19	3,30	2,93	3,03
K ₂ O	0,64	0,60	0,66	0,64	0,67	0,69	0,73	0,42	0,51
P ₂ O ₅	0,43	0,43	0,42	0,42	0,50	0,51	0,52	0,47	0,48
LOI	4,95	3,96	3,72	4,32	1,57	1,24	1,11	2,12	0,88
mg*	0,60	0,57	0,60	0,59	0,63	0,62	0,59	0,58	0,58
Total	99,71	100,49	99,90	99,72	99,08	99,99	100,75	100,13	100,72
Rb	6,48	5,31	6,20	5,81	13,16	13,33	15,38	7,88	12,49
Cs	0,95	1,03	1,27	0,89	2,28	2,90	2,59	2,53	3,03
Sr	419,15	430,51	420,88	402,24	399,16	441,29	475,23	361,60	419,39
Ba	152,24	152,99	153,37	146,42	165,88	167,37	222,12	143,86	175,30
V	144,89	156,56	163,85	165,53	189,72	165,22	162,98	179,07	169,79
Cr	353,68	402,17	402,95	408,64	448,40	405,35	401,90	424,24	398,36
Co	37,82	40,64	40,10	42,38	45,88	41,65	40,71	46,01	44,13
Ni	174,49	190,53	184,73	189,12	213,60	187,18	183,47	225,80	210,85
Cu	53,75	56,75	43,48	36,88	21,96	14,20	11,88	23,31	12,97
Y	22,70	23,79	21,10	20,78	19,23	22,49	23,37	20,38	23,73
Nb	39,54	40,49	41,33	41,38	54,28	50,60	51,57	47,05	46,37
Ta	3,23	3,13	3,06	2,87	3,45	3,69	3,88	3,03	3,39
Zr	146,01	143,17	137,86	135,31	152,60	159,98	167,90	141,87	155,47
Hf	3,50	3,40	3,29	3,21	3,47	3,65	3,78	3,26	3,58
Mo	1,87	1,99	1,86	1,64	2,14	2,32	2,45	1,94	2,26
Pb	5,78	4,36	5,38	4,86	4,22	3,02	3,76	4,08	2,69
U	1,32	1,22	1,21	1,17	1,37	1,50	1,56	1,16	1,28
Th	4,28	4,07	3,91	3,80	4,22	4,67	4,83	3,85	4,29
La	25,80	25,35	24,31	23,71	25,68	28,48	29,64	23,80	27,00
Ce	47,28	46,58	44,52	43,38	46,64	51,52	53,71	43,46	49,28
Pr	5,46	5,39	5,13	4,98	5,20	5,83	6,08	4,92	5,66
Nd	23,12	22,78	21,76	21,18	21,81	24,23	25,23	20,68	23,77
Sm	5,38	5,44	5,05	5,01	4,85	5,45	5,71	4,80	5,51
Eu	1,63	1,73	1,68	1,66	1,78	1,69	1,79	1,62	1,71
Gd	5,30	5,50	5,12	4,96	4,84	5,41	5,70	4,82	5,60
Tb	0,84	0,88	0,78	0,76	0,74	0,83	0,86	0,74	0,86
Dy	4,46	4,63	4,21	4,04	3,81	4,42	4,52	3,94	4,59
Ho	0,84	0,86	0,78	0,76	0,70	0,82	0,84	0,74	0,86
Er	2,08	2,12	1,90	1,85	1,71	2,00	2,06	1,81	2,07
Tm	0,29	0,29	0,27	0,27	0,25	0,29	0,30	0,25	0,30
Yb	1,68	1,64	1,56	1,52	1,36	1,58	1,66	1,46	1,68
Lu	0,26	0,25	0,23	0,23	0,20	0,25	0,25	0,22	0,25
Nb/Y	1,74	1,70	1,96	1,99	2,82	2,25	2,21	2,31	1,95
(La/Lu) _N	10,52	10,54	10,89	10,60	13,30	12,07	12,46	11,51	11,04
Ti/V	70,64	61,62	61,53	60,54	56,31	63,21	64,12	58,24	61,35
⁸⁷ Rb/ ⁸⁶ Sr		0,00886	0,00992			0,02252	0,02548		0,02345
⁸⁷ Sr/ ⁸⁶ Sr		0,70370	0,70374			0,70363	0,70375		0,70380
err. Sr		6	5			7	6		6
⁸⁷ Sr/ ⁸⁶ Sr ₍₂₆₇₎		0,70367	0,70370			0,70354	0,70365		0,70371
εSr		-7,32	-6,85			-9,16	-7,61		-6,79
¹⁴⁷ Sm/ ¹⁴⁴ Nd		0,13518	0,13331			0,12934	0,12941		0,13260
¹⁴³ Nd/ ¹⁴⁴ Nd		0,51280	0,51295			0,51261	0,51261		0,51277
err. Nd		4	5			5	3		4
εNd		5,26	8,31			1,69	1,69		4,74
T _{DM(Ga)}		0,68	0,37			0,98	0,98		0,72

Table 2.- Major element (wt.%) and trace element (ppm) composition and isotopic ratios of selected samples from the Alfonso de Guilla igneous rocks. Isotopic initial ratios were recalculated to 267 Ma (Debon and Zimmerman, 1993; Galé, 2005).

Tabla 2.- Composición en elementos mayores (% en peso) y traza (ppm) y relaciones isotópicas de las muestras seleccionadas de las rocas ígneas de Alfonso de Guilla. Las relaciones isotópicas iniciales se han calculado a 267 Ma (Debon y Zimmerman, 1993; Galé, 2005).

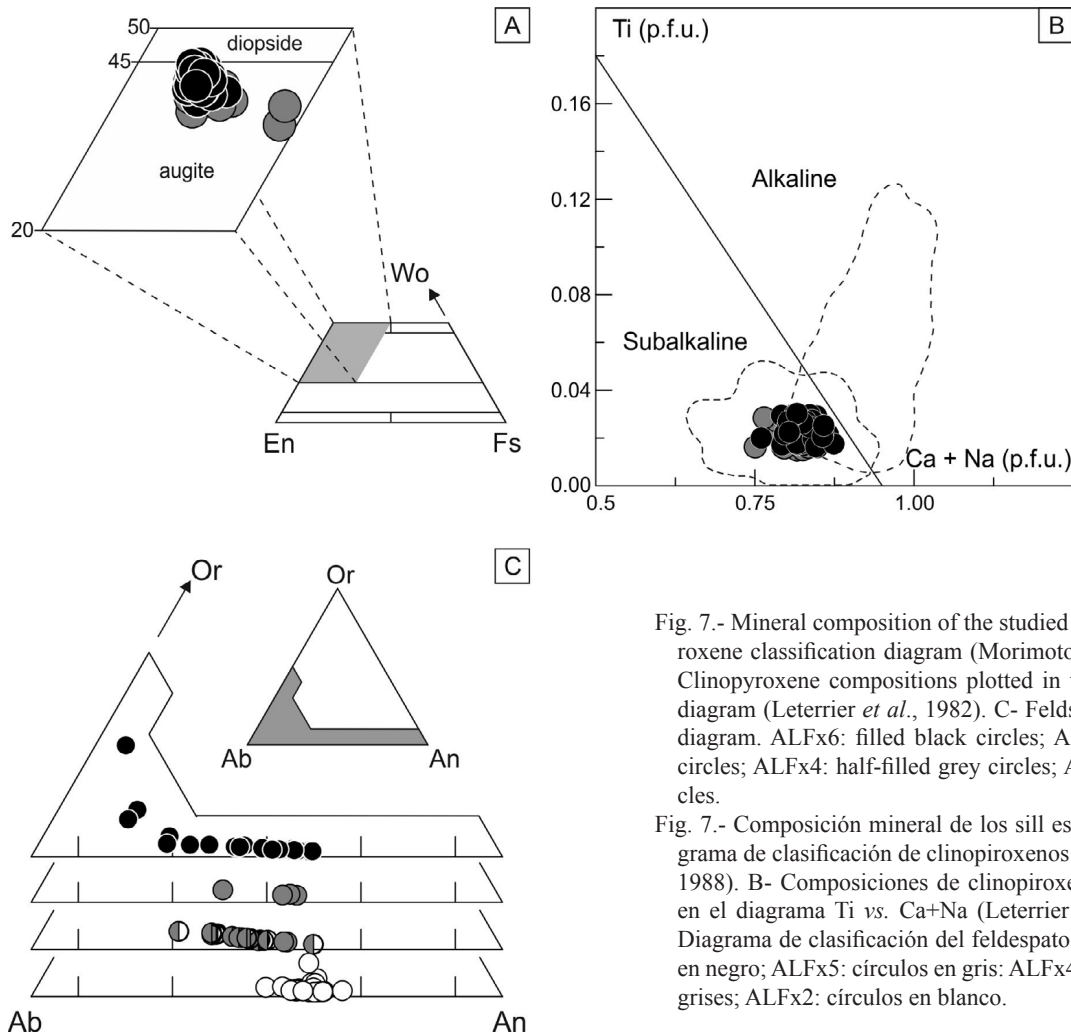


Fig. 7.- Mineral composition of the studied sills. A- Clinopyroxene classification diagram (Morimoto *et al.*, 1988). B- Clinopyroxene compositions plotted in the Ti vs. Ca+Na diagram (Leterrier *et al.*, 1982). C- Feldspar classification diagram. ALFx6: filled black circles; ALFx5: filled grey circles; ALFx4: half-filled grey circles; ALFx2: white circles.

Fig. 7.- Composición mineral de los sill estudiados. A- Diagrama de clasificación de clinopiroxenos (Morimoto *et al.*, 1988). B- Composiciones de clinopiroxeno representadas en el diagrama Ti vs. Ca+Na (Leterrier *et al.*, 1982). C- Diagrama de clasificación del feldespatos. ALFx6: círculos en negro; ALFx5: círculos en gris; ALFx4: medios círculos grises; ALFx2: círculos en blanco.

planes, so they can be considered sill-like structures. The levels are very close to each other, and get even closer towards the top of the sequence. Therefore, they probably belong to a single, multiple sill. This hypothesis is supported by the similar mineral and whole-rock compositions of the different analysed levels (Figs. 7, 8, 9, 10). Consequently, the multiple Alfonso de Guilla sill is a complex consisting of at least six individual levels, which become thinner towards the top.

The formation of a multiple sill instead of a large, homogenous magma body depends on the injection frequency and the rate of solidification. If the first igneous level has already solidified and perhaps cooled down to a temperature similar to that of the country rock, then the next sill to form will remain a separate unit, even if adjacent, and the initial sill has no chance of developing into a magma chamber (Burchardt and Gudmundsson, 2008).

The heat transfer approximation by Jaeger (1968) permits calculating the cooling time of the levels of the sill. For an average thickness of 1 m and a thermal diffusivity of 10^{-6} m²/s (Huppert and Sparks, 1980), 7 h after the emplacement of the magma the centre of the sill started

cooling; 69 h after the emplacement of the magma cooling was substantial at the centre of the sill and about as much heat had been lost to the country-rock as remained in the sill. Taking these calculations into account, the cooling time of each level was fast, conditioning the formation of a multiple sill.

Irregular contacts marked by wavy, billowed margins (Fig. 5A) and the development of peperites (Fig. 5E) have been described by other authors where magma has come in contact with wet, unconsolidated sediment (Befus *et al.*, 2009; Kokelaar, 1982; Leat and Thompson, 1988; Kano, 1991; Walker, 1992; Kano, 2002; Lavine and Aalto, 2002; Németh and Martin, 2007). The fact that peperites are only recognised in ALFx4 and ALFx6 levels is probably related to the fact that they are the thickest levels (ALFx6 is more than 3 meters thick). In this situation, the magma cooling rate is significantly lower than in the other levels, allowing for the development of this type of magma-sediment interactions. Furthermore, the presence of irregular fragments of structure-less sediments inside all the igneous levels (Fig. 5B-D) supports the interaction between the magma and the unconsolidated wet

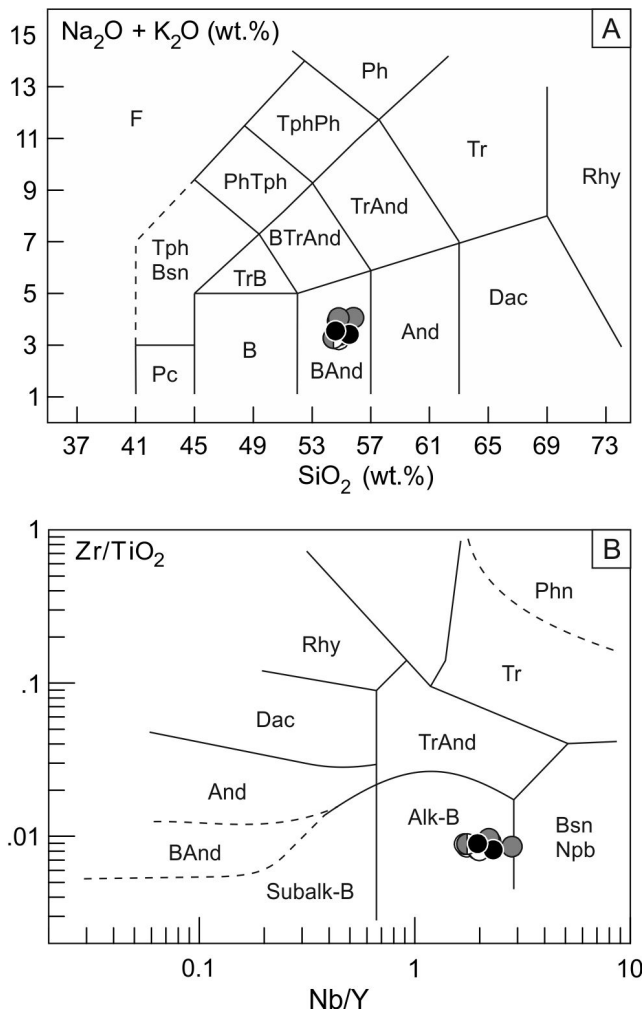


Fig. 8.- Total Alkalis vs. Silica (TAS) diagram (Le Bas *et al.*, 1986) (A) and Zr/TiO₂ vs. Nb/Y diagram (Winchester and Floyd, 1977) (B) applied to whole-rock compositions from the studied sills. ALFx6: filled black circles; ALFx5: filled grey circles; ALFx2: white circles.

Fig. 8.- Diagrama con proyección Álcalis Total vs. Sílice (TAS) (Le Bas *et al.*, 1986) (A) y diagrama Zr/TiO₂ vs. Nb/Y (Winchester and Floyd, 1977) (B) aplicados a las composiciones de roca total de los sills estudiados. ALFx6: círculos en negro; ALFx5: círculos en gris; ALFx2: círculos en blanco.

sediments (Kokelaar, 1982).

The emplacement of the magma into unconsolidated, wet sediments agrees with the sedimentation of the Middle and Upper Parts of the Alcotas Formation in a fluvial environment under periods of humid conditions (Arche and López-Gómez, 2005; De la Horra *et al.*, 2012; Diéguez *et al.*, 2007).

Finally, a shallow emplacement level is inferred from the presence of vesicles (Fig. 5C-E), since low lithostatic pressures are necessary to enable the degassing of the magma (Latypov, 2003). The greater abundance of vesicles in the chilled margins of the thickest levels is also due to their slower cooling rates.

7.2. Geochemical affinity, conditions of crystallisation and mantle source

The identification of the geochemical affinity of the studied rocks is not straight. On the one hand, clinopyroxene has moderate Ti-contents (Table 1) and its composition is plotted within the subalkaline field defined by Leterrier *et al.* (1982; Fig. 7B). In addition, these rocks have low total alkalis (Na₂O + K₂O wt. %) contents (Table 2) and, therefore, a lack of normative nepheline (Le Maitre, 2002), suggesting a subalkaline affinity. On the other hand, plagioclase compositions display a typically alkaline trend of increasing orthoclase with decreasing anorthite (Fig. 7C) and whole-rock incompatible element ratios point to an alkaline affinity (Nb/Y: 1.70 – 2.82; Fig. 8B). Moreover, Ti/V ratios over 50 (Table 2) are typical of alkali basalts and oceanic island basalts (Shervais, 1982). As a consequence, the affinity of the rocks should be better explained as transitional between subalkaline and alkaline. This feature is characteristic of some Middle-Upper Permian magmatisms from the western Tethys (e.g., Pyrenees, Catalonian Coastal Ranges, Corsica-Sardinia and southern France; Lago *et al.*, 2004a; Lapierre *et al.*, 1999; Traversa *et al.*, 2003; Ubide *et al.*, 2010), resulting from a transitional tectono-magmatic regime, between the Variscan compression and the Alpine extension (e.g., Bixel, 1988; Bonin, 1988; Cassinis *et al.*, 2012).

In order to constrain the crystallisation conditions of the magma, we have applied the MELTS software (Asimow and Ghiorso, 1998; Ghiorso and Shack, 1995) to the composition of the analysed samples. The low Na₂O concentrations (0.18-0.51 wt. %) and Al^{VI} p.f.u. values (0.00–0.06) of the studied clinopyroxenes indicate a low pressure of crystallisation (e.g., Nimis, 1995), compatible with the presence of vesicles in the rocks and with the emplacement of the magma into unconsolidated sediments (see section 7.1). Accordingly, we have considered a low pressure for the calculations (100 MPa). The liquidus temperatures range from 1265 to 1198 °C; compositions from the sill ALFx5 yield the highest temperatures, whereas the lowest ones correspond to sill ALFx2. In agreement with this, in ALFx5 and ALFx6 levels minerals play a different role in the fractionation process than in ALFx2, where ferromagnesian minerals are very scarce and the fractionation process was probably controlled by plagioclase. The isobaric equilibrium crystallisation model yields the following results: olivine crystallises in the first place, at 1230-1220 °C; plagioclase is the predominant phase, starting to crystallise at 1110-1080 °C; clinopyroxene (starting at 1030-1000 °C) appears as a late phase, probably crystallising at the emplacement level. In all the cases, the model generates opaque miner-

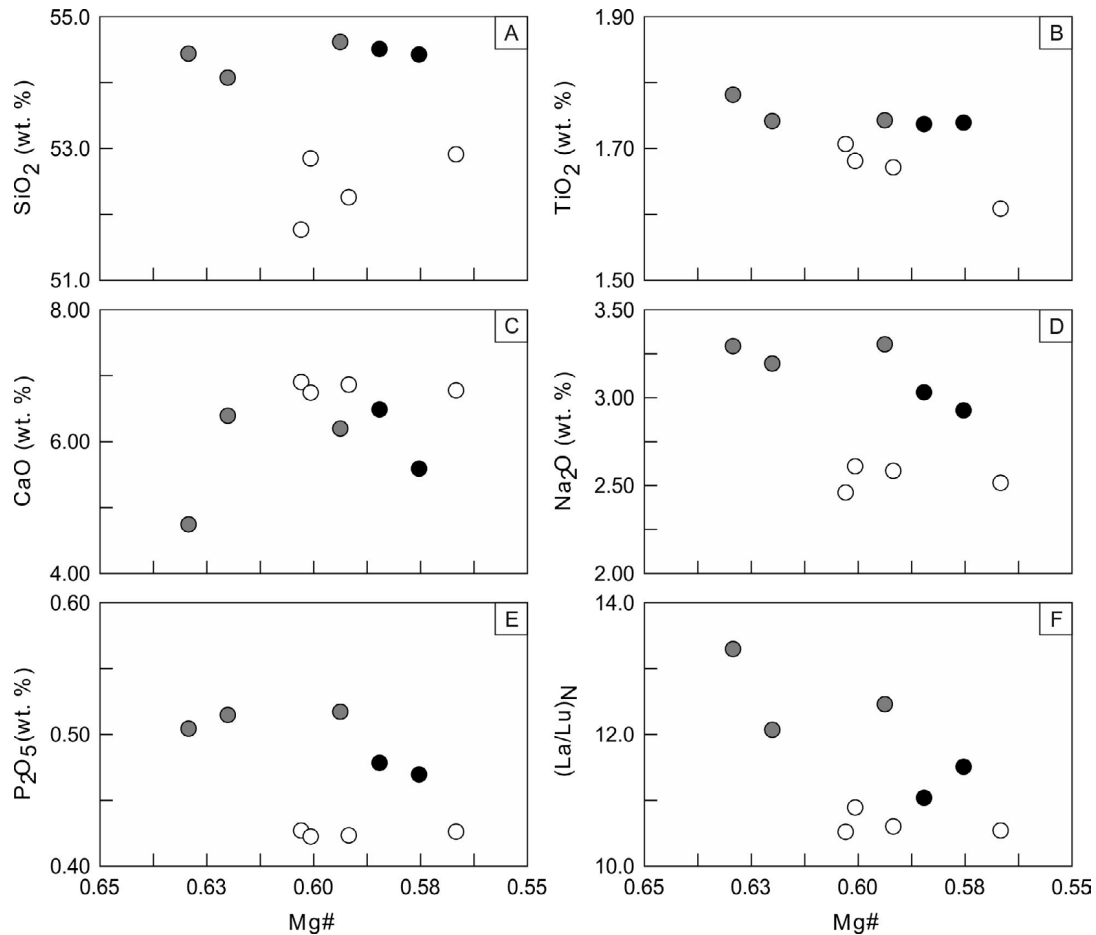


Fig. 9.- Whole-rock compositions of the studied sills plotted in bivariate diagrams vs. Mg#. ALFx6: filled black circles; ALFx5: filled grey circles; ALFx2: white circles.

Fig. 9.- Composiciones de roca total de los sills estudiados representadas en diagramas bivariantes vs. Mg#. ALFx6: círculos en negro; ALFx5: círculos en gris; ALFx2: círculos en blanco.

als, apatite and orthopyroxene. In general, the obtained crystallisation sequences are rather similar to the real ones observed in the studied rocks; the presence of orthopyroxene in the model (not recognised in the rocks) is probably related to the high Al₂O₃ contents of the rocks and is coherent with their normative hypersthene.

According to their relatively low MgO, Cr and Ni contents, the composition of the studied rocks does not represent primitive melts in equilibrium with their mantle source. The high SiO₂ and Al₂O₃ contents, resulting in normative quartz, hypersthene and corundum, point to a modification of the mantle melts *en route* to the emplacement level or even related to the emplacement mechanism. This hypothesis is supported by the presence of xenocrysts of quartz and andalusite with resorption textures. Besides, fragments of sediments are frequently observed inside the sill and even magma-sediment intermixtures (peperites) have been recognised in the thickest level. The addition of variable proportions of this type of felsic, peraluminous sediments would explain the anomalous enrichments in SiO₂ and Al₂O₃. Trace element and isotopic Sr results do

not support a significant crustal contamination (e.g., low and homogeneous ϵ Sr values). Therefore, modification of the melts during emplacement seems the most important mechanism.

The primitive mantle – normalised trace element contents (Fig. 10) are similar to melts of enriched mantle sources with a HIMU component. This type of source is supported by the isotopic results (Fig. 11), despite the large variability of the Nd isotopic ratios. The high (La/Lu)_N values of the samples (Table 2) are consistent with highly fractionated melts, common in enriched mantle sources.

Concerning the composition of the melting mantle source, the negative anomalies in alkali elements (K, Rb, Ba) (Fig. 10) appear to require the presence of an amphibole or phlogopite residue in this mantle source. The relative abundances of alkali elements can be used to determine which of these phases were retained in the mantle during the melting process. According to McCoy-West *et al.* (2010), melts in equilibrium with phlogopite are expected to present Rb/Sr (> 0.1) and Ba/Rb (< 20) ratios significantly higher and lower, respectively, than melts in

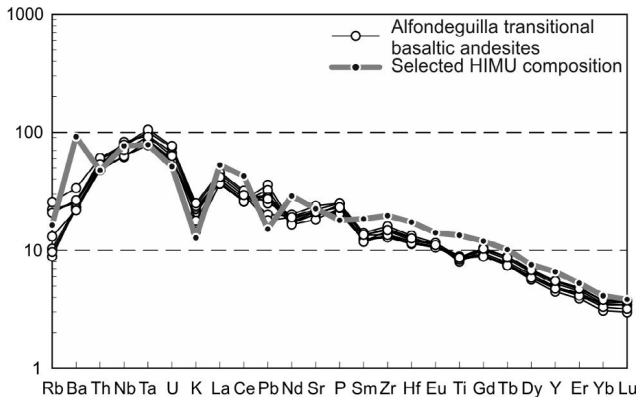


Fig. 10.- Primitive mantle-normalised multi-elemental diagram of the studied sills. Normalising values are from McDonough and Sun (1995). Selected HIMU composition from Woodhead (1996).

Fig. 10.- Diagrama multielemental de los sills estudiados, normalizado a manto primitivo. Los valores de normalización son de McDonough and Sun (1995). Composición seleccionada de HIMU de Woodhead (1996).

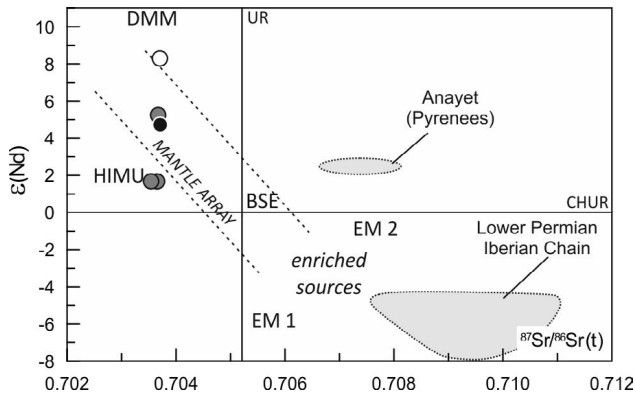


Fig. 11.- Nd-Sr isotopic ratios diagram for the studied sills. Fields for DMM, HIMU, EMI and EMII are from Hart (1988) with updates after Hart et al. (1992). BSE = Bulk Silicate Earth, CHUR = CHondritic Uniform Reservoir. Fields for Anayet and Lower Permian Iberian Chain magmatisms are from Lago et al. (2004a) and Lago et al. (2004b), respectively.

Fig. 11.- Diagrama de relaciones isotópicas Nd-Sr de los sills estudiados. Composiciones de DMM, HIMU, EMI y EMII definidos por Hart (1988) con actualizaciones en Hart et al. (1992). BSE = Promedio de la Tierra Silicatada, CHUR = Reservoirio Condritico Uniforme. Datos de Anayet y Cadena Ibérica (Pérmico Inferior) tomados de Lago et al. (2004a) y Lago et al. (2004b), respectivamente.

equilibrium with amphibole ($Rb/Sr < 0.06$ and $Ba/Rb > 20$; Furman and Graham, 1999). Hence, in the studied samples Rb/Sr (0.01-0.03) and Ba/Rb (12.55-28.79) ratios point to amphibole as the K-rich residual phase. The Ti small negative anomaly is unlikely to be related to the retention of opaque minerals in the mantle source, as Nb and Ta are highly enriched in the studied rocks (Fig. 10). Instead, the aforementioned amphibole residual phase could also retain Ti if it were a Ti-rich amphibole type (e.g., kaersutite). Therefore, the retention of kaersutite in the mantle source is probably responsible for the de-

pletion in alkali elements and Ti observed in the studied sills. The presence of kaersutite as a residual phase during mantle melting has been previously proposed for the Permian sills cropping out in the Pyrenees (Galé, 2005).

7.3. Age of the Alfonso de Guilla sill

No reliable ages were obtained from the $^{40}Ar/^{39}Ar$ experiments on whole-rock samples. This is probably due to the high degree of alteration of the samples, even though leached and unleached samples were analysed. Alternatively, the hydrothermal events developed in the Iberian Ranges during the Mesozoic (Tritllá and Solé, 1999) could have opened the Ar system. Indeed, hydrothermal Hg-deposits hosted in the Cañizar Formation are observed in the studied area (Tritllá and Solé, 1999).

However, field criteria can help to constrain the age of the intrusion. First of all, the sill emplaces into the Middle-Upper Permian sedimentary rocks of the Alcotas Formation (De la Horra et al., 2012), defining a maximum age for the hypovolcanic rocks. Furthermore, both the sill and the sedimentary country-rocks are affected by a network of fractures (NE-SSE and ESE-WNW) compatible with the main Alpine fault directions (Arche and López-Gómez, 1996; De Vicente et al., 2009), defining a minimum age for the sill.

Additionally, the development of billowed margins and peperites, the presence of fragments of structure-less sediments from the country-rocks inside the sill, the presence of vesicles and the composition of clinopyroxene indicate that the magma emplaced into wet, unconsolidated, shallow sediments (see sections 7.1 and 7.2). These arguments imply the sill emplaced shortly after the deposition of the sediments of the Alcotas Formation. Hence, the age of the sill can be defined as Middle-Upper Permian.

Analogous situations of Permian basins where basic sills were emplaced into the Middle-Upper Permian sedimentary rocks have been widely reported throughout the western Tethys and, specifically, in the Pyrenees (e.g., Cinco Villas Massif, Anayet Basin; Bixel, 1988; Galé, 2005; Lago et al., 2004a).

From the above discussion we conclude that the most probable age for the newly found igneous rocks in Alfonso de Guilla is Middle-Upper Permian, representing the youngest Paleozoic volcanic event found up to now in the Iberian Ranges.

7.4. Comparison with other Permian magmatisms in the western Tethys

The transition from late-Variscan events to early Alpine episodes is characterised by two tectono-magmatic cy-

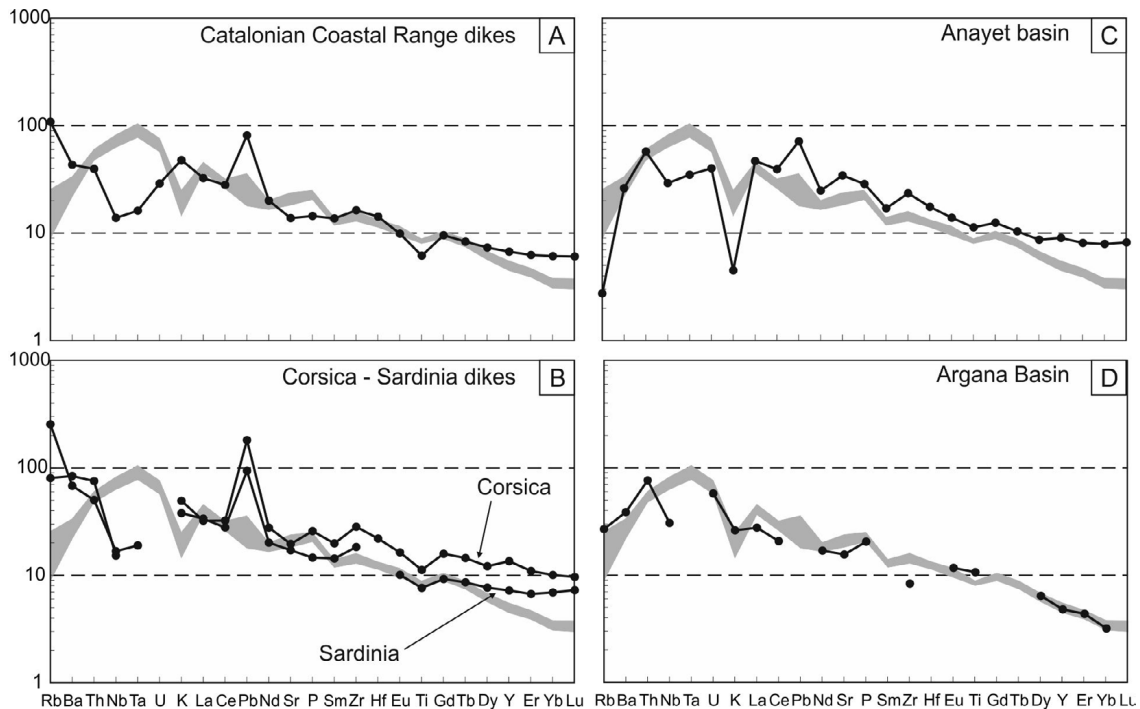


Fig. 12.- Comparison between the studied samples and other Permian magmatism: Catalonian Coastal Ranges (A), Corsica-Sardinia (B), Anayet Basin (Pyrenees, C) and Argana Basin (High Atlas, D). Data from Ait Chayeb *et al.* (1998), Buraglini and Traversa (2000), Lago *et al.* (2004a), Ronca and Traversa (1996) and Ubide *et al.* (2010).

Fig. 12.- Comparación de las muestras estudiadas con otros magmatismos Pérmicos: Cadenas Costero-Catalanas (A), Córcega-Cerdeña (B), Cuenca de Anayet (Pirineos, C) y Cuenca de Argana (Alto Atlas, D). Datos composicionales de Ait Chayeb *et al.* (1998), Buraglini y Traversa (2000), Lago *et al.* (2004a), Ronca y Traversa (1996) y Ubide *et al.* (2010).

cles in the western Tethys (Bixel, 1988; Bonin, 1988). These cycles reflect the transition from late-Variscan transtension to early Alpine extension and opening of the Neotethys Ocean with progressive westward marine ingression (Cassinis *et al.*, 2012; Lago *et al.*, 2004a). The first cycle (“Orogenic”) is composed of calc-alkaline subintrusive acidic to effusive basic-intermediate rocks (Gaggero *et al.*, 2007 and references therein). The second cycle (“Anorogenic”) comprises basic and acid rocks traditionally considered alkaline; however, many basic rocks show different geochemical affinities, from tholeiitic to transitional (e.g., Lapierre *et al.*, 1999; Traversa *et al.* 2003; Ubide *et al.*, 2010). The age of these cycles is believed to be diachronous between the different Tethyan domains, although the “Anorogenic” cycle always postdates the “Orogenic” cycle (Gaggero *et al.*, 2007). Both cycles are mainly comprised during the Permian period (Gaggero *et al.*, 2007). Most datings for the first cycle yield Lower Permian ages, whereas the second cycle was developed from the Middle Permian up to the Middle Triassic (e.g., Dallagiovanna *et al.*, 2009; Gaggero *et al.*, 2007; Vaccaro *et al.*, 1991).

In the Iberian Ranges, the Lower Permian magmatism are rather evolved (andesite-rhyolite) and calc-alkaline, with a clear crustal signature (Lago *et al.*, 2004b). Thus,

they are related to the first, “Orogenic” cycle of Bonin (1988). In contrast, the Alfonteguilla sill is basic-intermediate, transitional between subalkaline and alkaline (see section 7.2) and Middle-Upper Permian in age (see section 7.3). Accordingly, it probably belongs to the second, “Anorogenic” cycle. To our knowledge, this is the first report of a magmatism related to the second cycle in the Iberian Ranges.

Most of the basic-intermediate rocks related to the second cycle, mainly those from the Catalonian Coastal Ranges, Corsica-Sardinia and southern France, show similar geochemical features. They present general Nb (and Ta) depletions and Pb enrichments relative to the primitive mantle (Fig. 12A, B). Besides, they show low LREE/HREE fractionation degrees. The available isotopic ratios range from 0.7042 to 0.7075 for $^{87}\text{Sr}/^{86}\text{Sr}$ and from 0.5123 to 0.5131 for $^{143}\text{Nd}/^{144}\text{Nd}$ (Gaggero *et al.*, 2007; Lapierre *et al.*, 1999). These features are typical of volcanic-arc lithospheric magmas related to crustal contamination, pointing to slab-recycling processes in a subduction context (Lapierre *et al.*, 1999; Ronca *et al.*, 1999; Ubide *et al.*, 2011). A major role of phlogopite, instead of amphibole, is recognised for their mantle source (Ubide *et al.*, 2011).

In contrast, the Alfonteguilla sill (Fig. 10) presents high Nb-Ta contents, a marked negative anomaly in K

and higher fractionation degrees. These characteristics, together with the isotopic results (Table 2), point to an enriched mantle source with the involvement of a HIMU component. Besides, the relative abundances of alkali elements indicate the presence of amphibole in the mantle source (see section 7.2). These features are not common in other Permian magmatism related to the western Tethys. We have only observed them in the Anayet Basin in the Pyrenees (Galé, 2005) and in the Argana Basin in the High Atlas (Aït Chayeb *et al.*, 1998) (Fig. 12C, D).

The marked differences in mantle source indicate that the Permian mantle beneath the western Tethys was heterogeneous and variably metasomatised, as suggested in previous studies (Gaggero *et al.*, 2007; Galé, 2005; Lapiere *et al.*, 1999).

8. Conclusions

A multiple sill of basaltic andesite hosted by the sedimentary rocks of the Middle-Upper Permian Alcotas Formation is described for the first time in the vicinity of Alfondeguilla village, in the south-eastern Iberian Ranges. The sill was emplaced at shallow levels, shortly after the deposition of the Alcotas Formation, as suggested by field and textural features (presence of billowed margins, peperites, structure-less fragments of sediments and vesicles) and by geochemical criteria (composition of the clinopyroxene crystals). Hence, the age of the sill is inferred to be Middle-Upper Permian. It therefore represents the youngest Paleozoic volcanic event found up to now in the Iberian Ranges. The sill shows a transitional affinity between calc-alkaline and alkaline rocks, similarly to other Permian magmatism related to the western Tethys.

The geochemical characterisation points to an enriched mantle source with the involvement of a HIMU component. The retention of residual kaersutite in the mantle source is considered the most probable cause for the depletion in alkali elements and Ti observed in the studied samples. Besides, the incorporation of fragments of the host sediments during emplacement would explain the high SiO₂ and Al₂O₃ contents of the sill.

The compositional features of the Alfondeguilla sill are not very common in the Permian magmatism of the western Tethys. Most of these magmatism have a different, subduction- or crustal contamination-related signature, implying that the Permian mantle in this domain was heterogeneous and metasomatised.

Acknowledgements

This work is a contribution from Projects CGL 2008–00093, CGL2010–09503–E, CGL2011–24408 of the

Spanish Research Ministry and from Projects UCM–BSCH–GR58/08: Análisis de Cuencas (910429) and Paleoclimas (910198) Universidad Complutense-Comunidad Autónoma de Madrid.

References

- Aït Chayeb, E.H., Youbi, N., El-Boukhari, A. Bouabdelli, M., Amrhar, M. (1998): Le volcanisme permien et mésozoïque inférieur du bassin d'Argana (Haut-Atlas occidental, Maroc): un magmatisme intraplaque associé à l'ouverture de l'Atlantique central. *Journal of African Earth Sciences* 26(4), 499-519. doi:10.1016/S0899-5362(98)00029-3
- Alonso-Azcárate, J., Arche, A., Barrenechea, J. F., López-Gómez, J., Luque, J., Rodas, M. (1997): Palaeogeographical significance of clay mineral assemblages in the Permian and Triassic sediments of the SE Iberian Ranges, eastern Spain. *Palaeogeography, Palaeoclimatology, Palaeoecology* 136, 309-330. doi:10.1016/S0031-0182(97)00044-8
- Arche, A., López-Gómez, J. (1996): Origin of the Permian-Triassic Iberian Basin, Central-Eastern Spain. *Tectonophysics* 266, 443-464. doi: 10.1016/S0040-1951(96)00202-8.
- Arche, A., López-Gómez, J. (1999): Tectonic and geomorphic controls on the fluvial styles of the Eslida Formation, Middle Triassic, Eastern Spain. *Tectonophysics* 315, 187-207. doi:10.1016/S0040-1951(99)00291-7
- Arche, A., López-Gómez, J. (2005): Sudden changes in fluvial style across the Permian-Triassic boundary in the eastern Iberian Ranges, Spain: Analysis of possible causes. *Palaeogeography, Palaeoclimatology, Palaeoecology* 229 (1-2), 104-126. doi: 10.1016/j.palaeo.2005.06.033
- Arche, A., López-Gómez, J., Vargas, H. (2002): Propuesta de correlación entre los sedimentos pérmicos y triásicos de la Cordillera Ibérica Este y de las Islas Baleares. *Geogaceta* 32, 275-278.
- Arche, A., López-Gómez, J., Marzo, M., Vargas, H. (2004): The siliciclastic Permian-Triassic deposits in Central and northeastern Iberian Peninsula (Iberian, Ebro and Catalan basins): a proposal for correlation. *Geologica Acta* 2, 305-320.
- Asimow, P. D., Ghiorso, M. S. (1998): Algorithmic modifications extending MELTS to calculate subsolidus phase relations. *American Mineralogist* 83, 1127-1131.
- Befus, K.S., Hanson, R.E., Miggins, D.P., Breyer, J.A., Busbey, A.B. (2009): Nonexplosive and explosive magma/wet-sediment interaction during emplacement of Eocene intrusions into Cretaceous to Eocene strata, Trans-Pecos igneous province, West Texas. *Journal of Volcanology and Geothermal Research* 181 (3-4), 155-172. doi:10.1016/j.jvolgeores.2008.12.017
- Benito, M., De la Horra, R., Barrenechea, J., López-Gómez, J., Rodas, M., Alonso-Azcárate, J., Arche, A., Luque, J. (2005): Late Permian continental sediments in the SE Iberian Ranges, eastern Spain: petrological and mineralogical characteristics and paleoenvironmental significance. *Palaeogeography, Palaeoclimatology, Palaeoecology* 229, 24-39. doi:10.1016/j.palaeo.2004.12.030
- Bixel, F. (1988): Le volcanisme Stéphanien-Permien des Pyrénées-Atlantiques. *Bulletin de Centres de la Recherche Exploration-production Elf-Aquitaine* 12, 661-706.
- Bonin, B. (1988): From orogenic to anorogenic environments: evidence from associated magmatic episodes. *Schweizerische Mineralogische und Petrographische Mitteilungen* 68, 301-311.
- Bourquin, S., Bercovici, A., López-Gómez, J., Diez, J.B., Broutin, J., Ronchi, A., Durand, M., Arche, A., Linol, B., Amour, F. (2011): The Permian-Triassic transition and the onset of Mesozoic sedimentation

- tation at the northwestern peri-Tethyan domain scale: Palaeogeographic maps and geodynamic implications. *Palaeogeography, Palaeoclimatology, Palaeoecology* 299 (1–2), 265-280. doi: 10.1016/j.palaeo.2010.11.007
- Buraglini, N., Traversa, G. (2000): Petrology and mineral chemistry of Late-Hercynian dykes from NW Corsica (France). *Periodico di Mineralogia* 69 (3), 269-310.
- Burchardt and Gudmundsson, (2008)
- Cassinis, G., Perotti, C., Ronchi, A. (2012): Permian continental basins in the Southern Alps (Italy) and peri-mediterranean correlations. *International Journal of Earth Sciences* 101, 129-157. doi:10.1007/S00531-011-0642-6
- Christie-Blick, N., Biddle, K.T. (1985): Deformation and basin formation along strikeslip. In: Biddle, K.T., Christie-Blick, N. (eds), *Strike-slip deformation, basin formation and sedimentation*. Society of Economic Paleontologists and Mineralogists Special Publication 37, 1-34. doi:10.2110/pec.85.37.0001
- Dallagiovanna, G., Gaggero, L., Maino, M., Seno, S., Tiepolo, M. (2009): U–Pb zircon ages for post-Variscan volcanism in the Ligurian Alps (Northern Italy). *Journal of the Geological Society* 166, 101–114. doi:10.1144/0016-76492008-027
- De la Horra, R., Benito, M., López-Gómez, J., Arche, A., Barrenechea, J., Luque, J. (2008): Palaeoenvironmental significance of Late Permian paleosols in the SE Iberian Ranges, Spain. *Sedimentology* 55, 1849-1873. doi: 10.1111/j.1365-3091.2008.00969.x
- De la Horra, R., Galán-Abellán, A.B., López-Gómez, J., Sheldon, N.D., Barrenechea, J.F., Luque, F.J., Arche, A., Benito, M.I. (2012): Paleocological and paleoenvironmental changes during the continental Middle–Late Permian transition at the SE Iberian Ranges, Spain. *Global and Planetary Change* 94-95, 46-61. doi: 10.1016/j.gloplacha.2012.06.008
- De Vicente, G., Vegas, R. Muñoz-Martín, A., Van Wees, J.D., Casas-Sáinz, A., Sopena, A., Sánchez-Moya, Y., Arche, A., López-Gómez, J., Olaiz, A. Fernández-Lozano, J. (2009): Oblique strain partitioning and transpression on an inverted rift: The Castilian Branch of the Iberian Chain. *Tectonophysics* 470 (3–4), 224-242. doi: 10.1016/j.tecto.2008.11.003
- Debon, F., Zimmerman, J.L. (1993): Mafic dykes from some plutons of the Western Pyrenean Axial Zone (France, Spain): markers of the transition from late–Variscan to early–Alpine events. *Schweizerische Mineralogische und Petrographische Mitteilungen* 73, 421-433.
- Diéguez, C., De la Horra, R., López-Gómez, J., Benito, M.I., Barrenechea, J., Arche, A., Luque, J. (2007): Late Permian plant remains in the SE Iberian Ranges, Spain: Biodiversity and palaeovegetational significance. *Comptes Rendus Palevol* 6, 403-411. doi:10.1016/j.crpv.2007.10.001
- Doubinger, J., López-Gómez, J., Arche, A. (1990): Pollen and spores from the Permian and Triassic sediments of the Iberian Ranges, Cueva de Hierro (Cuenca) to Chelva-Manzanera (Valencia-Teruel) region, Spain. *Review of Palaeobotany and Palynology* 66, 25-45. doi:10.1016/0034-6667(90)90027-G
- Droop, G.T.R. (1987). A general equation for estimating Fe³⁺ concentrations in ferromagnesian silicates and oxides from microprobe analyses, using stoichiometric criteria. *Mineralogical Magazine* 51, 431–435. doi:10.1180/minmag.1987.051.361.10
- Frey, F.A., Green, D.H., Roy, S.D. (1978): Integrated models of basalt petrogenesis: a study of quartz tholeiites to olivine melilitites from SE Australia utilizing geochemical and experimental petrological data. *Journal of Petrology* 19, 463-513. doi:10.1093/petrology/19.3.463
- Furman, T., Graham, D. (1999): Erosion of lithospheric mantle beneath the East African Rift system: geochemical evidence from the Kivu volcanic province. *Lithos* 48, 237-262. doi:10.1016/S0024-4937(99)00031-6
- Gaggero, L., Oggiano, G., Buzzi, L., Slejko, F., Cortesogno, L. (2007): Post-Variscan mafic dikes from the late orogenic collapse to the Tethyan Rift: evidence from Sardinia. *Ophioliti* 32(1), 15-37. doi: 10.4454/ofioliti.v32i1.344
- Galé, C. (2005): *Evolución geoquímica, petrogenética y de condiciones geodinámicas de los magmatismos pérmicos en los sectores central y occidental del Pirineo*. PhD Thesis. Universidad de Zaragoza. 457p.
- Ghiorso, M.S., Sack, R.O. (1995): Chemical mass transfer in magmatic processes. IV. A revised and internally consistent thermodynamic model for the interpolation and extrapolation of liquid-solid equilibria in magmatic systems at elevated temperatures and pressures. *Contributions to Mineralogy and Petrology* 119, 197-212. doi:10.1007/BF00307281
- Gil, A., Lago, M., Galé, C., Pueyo, Ó., Ubide, T., Larrea, P., Tierz, P. (2011): The lamprophyre dikes in the Panticosa Pluton (Pyrenean Axial Zone): syn-emplacement with later-hercynian extension. *Geogaceta* 50-1, 51-54.
- Hart, S.R. (1988): Heterogeneous mantle domains—signatures, genesis and mixing chronologies. *Earth and Planetary Science Letters* 90, 273–296. doi:10.1016/0012-821X(88)90131-8
- Hart, S.R., Hauri, E.H., Oschmann, L.A., Whitehead, J.A. (1992): Mantle plumes and entrainment: isotopic evidence. *Science* 256, 517–520. doi:10.1126/science.256.5056.517
- Hoffman, A.W. (1997): Mantle geochemistry: the message from oceanic volcanism. *Nature* 385, 219–229. doi:10.1038/385219a0
- Huppert, H.E., Sparks, R.S.J. (1980): Restrictions on the compositions of mid-ocean ridge basalts: a fluid dynamical investigation. *Nature* 286, 46–48. doi:10.1038/286046a0
- Jaeger, J.C. (1968): Cooling and solidification of igneous rocks. In: Hess, H.H., Poldervaart, A. (eds.), *Basalts: The Poldervaart Treatise on Rocks of Basaltic Compositions*. Wiley Interscience, New York, p. 503–536.
- Kano, K. (1991): Miocene pillowed sills in the Shimane Peninsula, SW Japan. *Journal of Volcanology and Geothermal Research* 48, 359–366. doi:10.1016/0377-0273(91)90051-Z
- Kano, K. (2002): Middle Miocene volcanoclastic dikes at Kukedo, Shimane Peninsula, SW Japan: fluidization of volcanoclastic beds by emplacement of syn-volcanic andesitic dikes. *Journal of Volcanology and Geothermal Research* 114, 81–94. doi:10.1016/S0377-0273(01)00283-9
- Kokelaar, B.P. (1982): Fluidization of wet sediments during the emplacement and cooling of various igneous bodies. *Journal of the Geological Society* 139, 21–33. doi:10.1144/gsjgs.139.1.0021
- Lago, M., Arranz, E., Pocoví, A., Galé, C., Gil-Imaz, A. (2004a): Permian magmatism and basin dynamics in the Southern Pyrenees: a record of transition from late Variscan transtension to early Alpine extension. In: Wilson, M., Neumann, E.-R., Davies, G.R., Timmerman, M.J., Heeremans, M., Larsen, B.T. (eds.), *Permo-Carboniferous magmatism and rifting in Europe*. Geological Society, London, Special Publications 223, 439-464. doi:10.1144/GSL.SP.2004.223.01.19
- Lago, M., Arranz, E., Pocoví, A., Galé, C., Gil-Imaz, A. (2004b): Lower Permian magmatism of the Iberian Chain, Central Spain, and its relationship to extensional tectonics. In: Wilson, M., Neumann, E.-R., Davies, G.R., Timmerman, M.J., Heeremans, M., Larsen, B.T. (eds.), *Permo-Carboniferous magmatism and rifting in Europe*. Geological Society, London, Special Publications 223, 465-490. doi:10.1144/GSL.SP.2004.223.01.20
- Lapierre, H., Basile, C., Dupuis, V. (1999): Basaltes et trachytes pérmien de l’Esterel (SE France); une serie tholeiitique transitionnelle

- epanchee pendant l'amincissement lithospherique. *Bulletin de la Société Géologique de France* 170(2), 253-265.
- Lavine, A. and Aalto, K.R. (2002): Morphology of a crater-filling lava lake margin, The Peninsula tuff cone, Tule Lake National Wildlife Refuge, California: implications for formation of peperite textures. *Journal of Volcanology and Geothermal Research* 114, 147-163. doi:10.1016/S0377-0273(01)00285-2
- Latypov, R.M. (2003): The origin of marginal compositional reversals in basic-ultrabasic sills and layered intrusions by Soret fractionation. *Journal of Petrology* 44, 1579-1618. doi:10.1093/petrology/egg050
- Le Bas, M.J., Le Maitre, R.W., Streckeisen, A., Zanettin, B. (1986): A chemical classification of volcanic rocks based on the total alkali-silica diagram. *Journal of Petrology* 27, 745-750.
- Le Maitre, R.W. (ed) (2002): *Igneous Rocks. A Classification and Glossary of Terms*. Cambridge University Press, Cambridge. 236p.
- Leat, P.T. and Thompson, R.N. (1988): Miocene hydrovolcanism in NW Colorado, USA, fueled by explosive mixing of basic magma and wet unconsolidated sediment. *Bulletin of Volcanology* 50, 229-243. doi:10.1007/BF01047486
- Letierrier, J., Mauri, R.C., Thonon, P., Girard, D., Marchal, M. (1982): Clinopyroxenes composition as a method identification of the magmatic affinities of paleo-volcanic series. *Earth and Planetary Science Letters* 59, 139-154. doi:10.1016/0012-821X(82)90122-4
- López-Gómez, J., Arche, A., Pérez-López, A. (2002): Permian and Triassic. In: W. Gibbon, T. Moreno (eds.), *The Geology of Spain*. Geological Society, London, 185-212.
- López-Gómez, J., Arche, A., Marzo, M., Durand, M. (2005): Stratigraphical and palaeogeographical significance of the continental sedimentary transition across the Permian-Triassic boundary in Spain. *Palaeogeography, Palaeoclimatology, Palaeoecology* 229, 3-23. doi:10.1016/j.palaeo.2004.11.028
- McCoy-West, A.J., Baker, J.A., Faure, K., Wysoczanski, R. (2010): Petrogenesis and origins of Mid-Cretaceous continental intraplate volcanism in Marlborough, New Zealand: Implications for the long-lived HIMU magmatic mega-province of the SW Pacific. *Journal of Petrology* 51, 2003-2045. doi:10.1093/petrology/egq046
- Morimoto, N., Fabries, J., Ferguson, A.K., Ginzburg, I.V., Ross, M., Seifert, F.A., Zussman, J., Aoki, K., Gottardi, G. (1988) Nomenclature of pyroxenes. *Mineralogical Magazine* 52, 535-550. doi:10.1180/minmag.1988.052.367.15
- Németh, K., Martin, U. (2007): Shallow sill and dyke complex in western Hungary as a possible feeding system of phreatomagmatic volcanoes in "soft-rock" environment. *Journal of Volcanology and Geothermal Research* 159, 138-152. doi:10.1016/j.jvolgeores.2006.06.014
- Nimis, P. (1995): A clinopyroxene geobarometer for basaltic systems based on crystal-structure modelling. *Contributions to Mineralogy and Petrology* 121, 115-125. doi:10.1007/s004100050093
- Pankhurst, R.J., O'Nions, R.K. (1973): Determination of Rb/Sr and ⁸⁷Sr/⁸⁶Sr ratios of some standard rocks and evaluation of X-ray fluorescence spectrometry in Rb-Sr geochemistry. *Chemical Geology* 12, 127-136. doi:10.1016/0009-2541(73)90110-1
- Ronca, S., Traversa, G. (1996): Late-Hercynian dyke magmatism of Sarrabus (SE Sardinia). *Periodico di Mineralogia* 65, 35-70.
- Ronca, S., Del Moro, A., Traversa, G. (1999): Geochronology, Sr-Nd isotope geochemistry and petrology of late-Hercynian dyke magmatism from Sarrabus (SE Sardinia). *Periodico di Mineralogia* 68 (3), 231-260.
- Shervais, J.W. (1982): Ti-V plots and the petrogenesis of modern and ophiolitic lavas. *Earth and Planetary Science Letters* 59, 101-118. doi:10.1016/0012-821X(82)90120-0
- Skilling, I.P., White, J.D.L., McPhie, J. (2002). Peperite: a review of magma-sediment mingling. *Journal of Volcanology and Geothermal Research* 114, 1-17. doi:10.1016/S0377-0273(01)00278-5
- Traversa, G. (2000):
- Traversa, G., Ronca, S., Del Moro, A., Pasquali, C., Buraglini, N., Barabino, G. (2003): Late to post-hercynian dyke activity in the Sardinia-Corsica domain: a transition from orogenic calc-alkaline to anorogenic alkaline magmatism. *Bollettino della Società Geologica Italiana*, Vol. Esp. 2, 131-152.
- Tritllá, J., Solé, J. (1999). A newly dated Cretaceous hydrothermal event in the Iberian Ranges (Eastern Spain) and its significance with-in the Mesozoic thermal history in the Iberian Peninsula. *Ore Geology Reviews* 15, 243-259. doi:10.1016/S0169-1368(99)00009-8
- Ubide, T., Lago, M., Arranz, E., Galé, C., Larrea, P. (2010): The lamprophyric sub-vertical dyke swarm from Aiguablava (Catalonian Coastal Ranges): petrology and composition. *Geogaceta* 49, 83-86.
- Ubide, T., Galé, C., Arranz, E., Lago, M., França, Z., Larrea, P., Tierz, P. (2011): Subduction-related signature in late-Variscan lamprophyres from the Catalonian Coastal Ranges (northeast Spain). *Abstract Proceedings of the XXV IUGG General Assembly (Melbourne)*, p. 1924.
- Vaccaro, C., Atzori, P., Del Moro, A., Oddone, M., Traversa, G., Villa, I.G. (1991): Geochronology and Sr isotope geochemistry of Late-Hercynian dykes from Sardinia. *Schweizerische mineralogische und petrographische Mitteilungen* 71, 221-230.
- Van Wees, J.D., Arche, A., Beigdorf, C., López-Gómez, J., Cloetingh, S. (1998): Temporal and spatial variations in tectonic subsidence in the Iberian Basin (E. Spain). Inferences from automated forward modelling of high resolution stratigraphy (Permian-Mesozoic). *Tectonophysics* 300, 285-310. doi:10.1016/S0040-1951(98)00244-3
- Vargas, H., Gaspar-Escribano, J., López-Gómez, J., Van Wees, J.D., Cloetingh, S., De la Horra, R., Arche, A. (2009): A comparison of the Iberia and Ebro basins during the Permian and Triassic, eastern Spain: A quantitative subsidence modelling approach. *Tectonophysics* 474, 160-183. doi:10.1016/j.tecto.2008.06.005
- Walker, G.P.L. (1992): Morphometric study of pillow-size spectrum among pillow lavas. *Bulletin of Volcanology* 54, 459-474. doi:10.1007/BF00301392
- White, J.D.L., McPhie, J., Skilling, I., (2000): Peperite: a useful genetic term. *Bulletin of Volcanology* 62, 65-66. doi:10.1007/s004450050293
- Whitney, D.L., Evans, B.W. (2010): Abbreviations for names of rock-forming minerals. *American Mineralogist* 95, 185-187.
- Winchester, M.A., Floyd, P.A. (1977): Geochemical discrimination of different magma series and their differentiation products using immobile elements. *Chemical Geology* 20, 325-343. doi:10.1016/0009-2541(77)90057-2
- Woodhead J. (1996): Extreme HIMU in an oceanic setting: the geochemistry of Mangaia Island (Polynesia), and temporal evolution of the Cook-Austral hotspot. *Journal of Volcanology and Geothermal Research* 72, 1-19. doi:10.1016/0377-0273(96)00002-9
- Zindler, A., Hart, S. (1986): Chemical Geodynamics. *Annual Review of Earth and Planetary Sciences* 14, 493-571. doi:10.1146/annurev.earth.14.1.493