

Types of species described by M. P. Graells (1809-1898), found in the Real Colegio Alfonso XII (San Lorenzo del Escorial, Madrid)

MARÍA A. CARRASCO*, DOMINGO PEREA** & ALFONSO GARCÍA**

*Departamento de Biología Vegetal, I. Facultad de Ciencias Biológicas.
Universidad Complutense. E-28040 Madrid. Spain.

** Real Colegio Alfonso XII. E-28200 San Lorenzo del Escorial. Madrid. Spain

Abstract:

CARRASCO, M. A., PEREA, D. & GARCÍA, A. 1996. Types of species described by M. P. Graells (1809-1898), found in the Real Colegio Alfonso XII (San Lorenzo del Escorial, Madrid). *Bot. Complutensis*, 21: 87-97.

The Herbarium of M. P. Graells, considered lost, has been found with the typus materials of *Genista barnadesii* Graells, *Centaurea amblensis* Graells, *Centaurea cavanillesiana* Graells, *Centaurea janeri* Graells, *Leuzea rhaponticoides* Graells, *Colchicum clementei* Graells, *Narcissus nivalis* Graells and *Narcissus pallidulus* Graells.

We provide too the place of deposit of this types.

Also we present the unpublished icons of *Centaurea janeri* Graells and *Centaurea lagascani* Graells founded with the plants.

Keywords: Types, Graells.

Resumen:

CARRASCO, M. A., PEREA, D. & GARCÍA, A. 1996. Tipos de especies descritas por M. P. Graells (1809-1898), encontradas en el Real Colegio Alfonso XII (San Lorenzo del Escorial, Madrid). *Bot. Complutensis*, 21: 87-97.

Se ha encontrado el herbario de M. P. Graells, que se consideraba perdido. En él han aparecido los materiales tipo de *Genista barnadesii* Graells, *Centaurea amblensis* Graells, *Centaurea cavanillesiana* Graells, *Centaurea janeri* Graells, *Leuzea rhaponticoides* Graells, *Colchicum clementei* Graells, *Narcissus nivalis* Graells y *Narcissus pallidulus* Graells.

También presentamos los icones inéditos de *Centaurea janeri* Graells y *Centaurea lagascana* Graells que han sido encontrados con las plantas y señalamos los herbarios en los que se encuentran los tipos.

Palabras Clave: Tipificación, Graells.

INTRODUCTION

During the study of the Mariano de la Paz Graells's herbarium, founded in the Gabinete de Ciencias Naturales of the Real Colegio Alfonso XII of San Lorenzo del Escorial (Madrid, España), some of the original materials of the plants described by GRAELLS (1854 and 1859), have been found. This herbarium was apparently missing and repeatedly reported as disappeared (BUENO & al., 1988; CABALLERO, 1946: 550)

With the plants have also appeared the manuscript and icons of GRAELLS (1859) and the unpublished icons of *Centaurea janeri* Graells and *Centaurea lagascana* Graells (fig. 1).

Historical reasons commented by CARRASCO & al. (1996), explain the presence of the Graells's herbarium in the Real Colegio Alfonso XII.

To the herbaria cited by LANJOUW & al. (1957: 234) and BUENO & al. (1988: 152) as depository of Graells's materials, we must add now the herbarium Real Colegio Alfonso XII, (not yet registered in HOLMGREN & al. (1990), from now on named RCAXII), and also the herbarium MACB and MA with dupla of those.

For each species, the name, bibliographic reference, date and locality ("ind. loc.") are cited; the labels are transcribed according to the typographic conventions used by BURDET & al. (1979: 66).

This materials present labels of three kinds:

A: Labels of the serie "M. P. Graells// Herbarium Castellanicum". (fig. 2. a)

B: Labels of the serie "Herbarium Graelsianum [sic] // Plantae Castellanae". (fig. 2. b).

C: Labels without print, handwritten only. (fig. 2. c).

Exact date usually lacks both on Graells's labels and protologues. Description of the coincidence of protologue and label's data are shown with the following symbols:

(*) Place and date in the label and protologue are the same.

(**) Place in the label and protologue are the same, but the date in label is previous to the publication.

(***) Place in the label and protologue are the same, but there is not date in label.

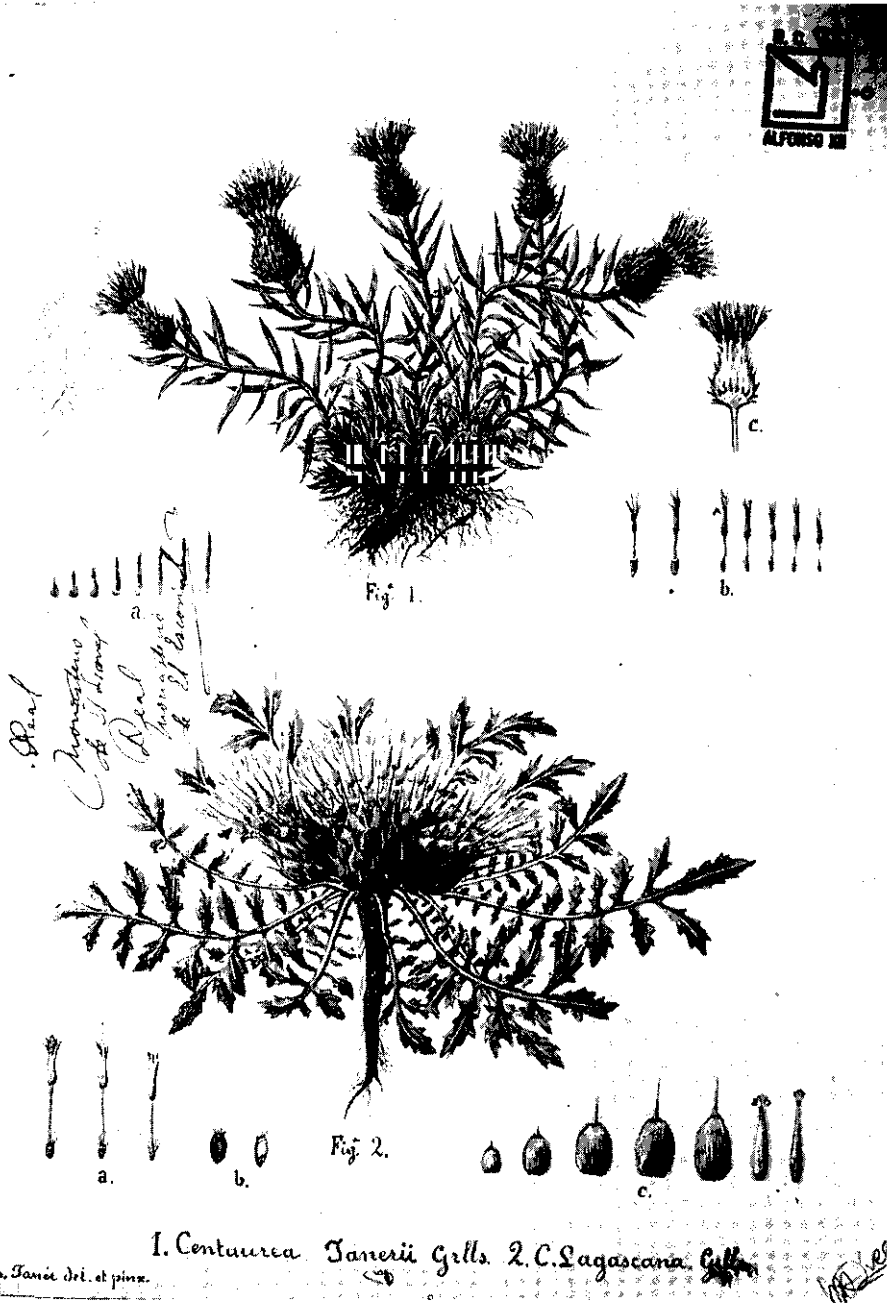


Fig. 1: Original drawing of *Centaurea janerii* Graells and *Centaurea lagascana* Graells

TYPIFICATION

Genista barnadesii Graells, *Indicatio Pl. Nov.* 5. 1854.

Ind. loc.: "Habitat in glareosis schistosis regionis subalpinae Puerto del Pico, Sierra de Gredos, Sierra del Barco ad alt. 6000' ubi florentem legi mense Junii et fructiferam mense Augusti: in Sierra de Guadalupe, prope el pozo de la nieve Cl. Barnades, vulgo Cambrion."

The specimen in RCAXII 3375 has four labels attached to it:

1. [Printed label annotated by Graells] (***) [b label]

HERBARIUM GRAELSIANUM// PLANTAE CASTELLANAE// Num. 28// *Genista Barnadesi / Graells/ Crescit in glareosis de la Sierra/ de Gredos Puerto del Pico y del Barco/ Mense Julio Augusto* [m. Graells, RCAXII 3375]

2. [Label m. Isern] [c label]

Genista// Puerto del Pico 6 Agos/ to 1852

3. [Label m. Graells] [c label]

28// *Genista à Spachio generis revisari/ nondum examinata sed examinanda.*

4. [Label m. Graells] [c label]

n° 28// *Genista lusitanica? // Sierra de Gredos/ Puerto del Pico.*

LECTOTYPE (designated here): RCAXII 3375.

ISOLECTOTYPE: RCAXII 3375(2), MACB 56478, MA and MA 58533 (*Spartium radiatum* L., Barnades in herbario cavanillesiano), cited by Graells in the protologue.

Centaurea ambiensis Graells, *Indicatio Pl. Nov.* 6. 1854.

Ind. loc.: "Habitat in arvis et collibus vallis Amblés, Puerto de Villatoro ad basim montis La Sarrota, ubi florentem legi die 27 junii et fructiferam 25 Augusti".

[Printed label annotated by Graells] (***) [a label]

M. P. GRAELLS// HERBARIUM CASTELLANUM// Num.// *Centaurea ambiensis / Graells/ Inter segetes in Valle Ambles et Puerto de Villatoro/ julio* [m. Graells. RCAXII 3453].

The label of the specimen RCAXII 3453 is undated, but it is coincident with the label annotated by Gandoger with the year 1851 (LY-GANDOGGER) as it appears in BUENO & *al.* (1988: 153); moreover the plant in the sheet RCAXII 3453 was used to draw the icon published by the author (GRAELLS, 1859) (figs. 3 and 4).

LECTOTYPE (designated here): RCAXII 3453

ISOLECTOTYPES: RCAXII 3453 (2); the specimens designated by FERNÁNDEZ CASAS & *al.* (1985: 72) LY-GANDOGGER; MACB 56470 ; MA.

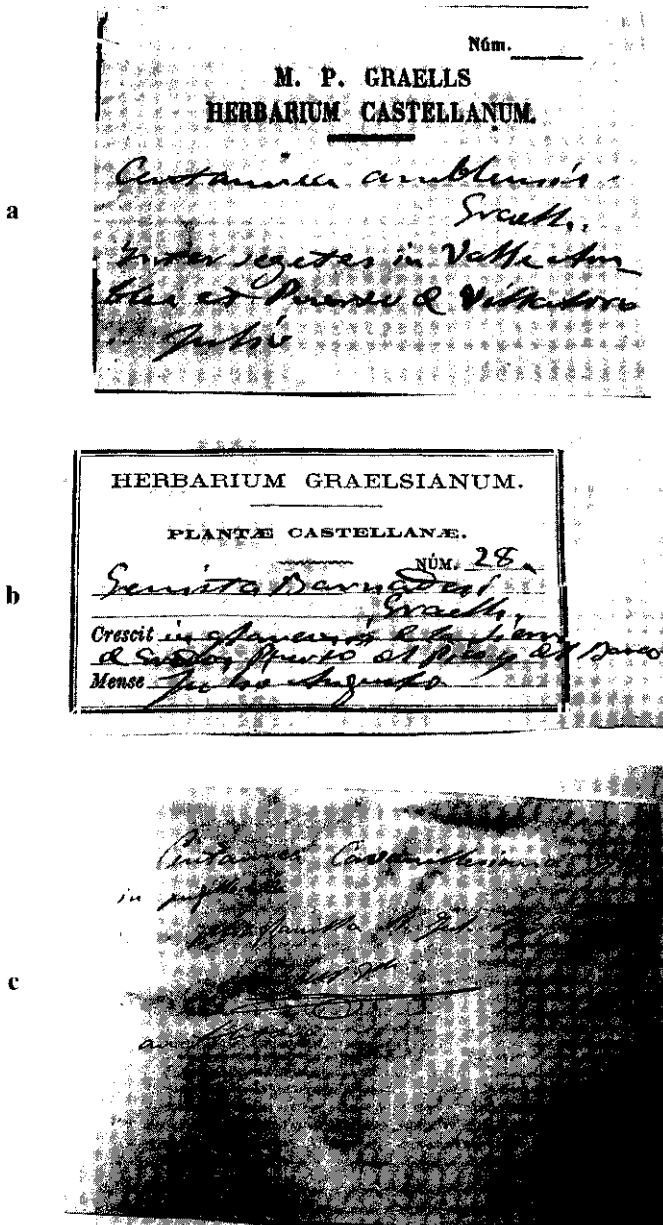


Fig. 2: Labels. a) Label of the serie "M. P. Graells//Herbarium Castellanium".
b) Label of the serie "Herbarium Graelsianum//Plantae Castellanae".
c) Handwritten label.



Fig. 3: Specimen RCAXII 3453 of *Centaurea amblensis* Graells.



Fig. 4: Drawing of *Centaurea amblensis* Graells (published in Graells, 1859).

Centaurea cavanillesiana Graells, *Indicatio Pl. Nov.* : 7. 1854.

Ind. loc.: “Habitat in arvis argillosis prope La Minglanilla, ubi florentem legi die 11 Julii 1853”

[Label m. Graells] (*) (fig. 2, c)

Centaurea Cavanillesiana, Grlls./ in pugillo 1º Minglanilla 11, Jul. 1853/ M. P. Graells [signed]/ an toletana [RCAXII 1612]

LECTOTYPE (designated here): The plant located down left in RCAXII 1612.

ISOLECTOTYPES: The other three specimens of RCAXII 1612, RCAXII 1612 (2); MACB 56469; MA.

Centaurea janerii Graells, *Mem. Real Acad. Ci. Madrid* 4: 466. 1859.

Ind. loc.: “Invenitur in Sierra de Avila prope el Puerto del Pico et juxta diversorium de Sta. Teresa, non procul à pago Cepeda la Mora, ubi mense julio anno 1855 collector Isern detexit”

[Printed label annotated by Graells] (***) [a label]

M. P. GRAELLS// HERBARIUM CASTELLANUM// NUM.// *Centaurea Janerii Graells / In Sierra de Avila, Puerto del/ Pico, prope la venta de Sta. Lucia/ Cepeda la Mora. Julio [m. Graells. RCAXII 1611]*

Granted that fortunately the unpublished original icons of *C. janerii* Graells and *Centaurea lagascana* Graells have now appeared with the plants, we can recognize the model of the drawing (fig. 5).

LECTOTYPE (designated here): RCAXII 1611.

ISOLECTOTYPES: RCAXII 1611(2); MACB 56468; MA.

Centaurea lagascana Graells, *Indicatio Pl. Nov.* 7. 1859.

Ind. loc.: “Habitat prope Caldas. Junio Lagasca legit”

TYPE : MA 135933, already commented by BUENO & *al.* (1988: 153) and FERNÁNDEZ CASAS & *al.* (1985: 93, lam. 47).

Fig. 1 shows the unpublished original drawing.

Leuzea rhaponticoides Graells, *Mem. Real Acad. Ci. Madrid* 4: 468. 1859.

Ind. loc.: “Inveni in quercetis et pinetis de Hoyoquesero florentem calendis julii, et fructiferam augusti, anno 1852= in Sierra de Guadalupe, Barnades”.

Graells in the protologue, mentions the materials collected in two different data (flower and fruit).

The original specimens in flower have a label in Graells’s hand attached to it: [Label m. Graells] (*) [c label]

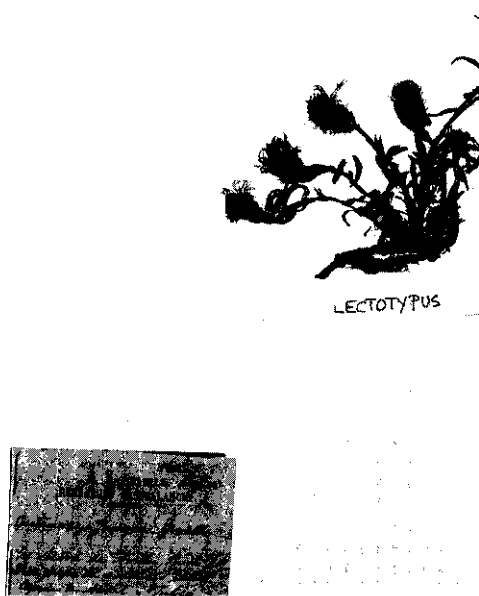


Fig. 5: Specimen RCAXII 1611 of *Centaurea janeri* Graells.

Leucea [sic] *raponticoides* Graells/ *Pinar de Hoyoquesero*/ julio 1852 [m. Graells, RCAXII 3450].

The original material in fruit, is a single plant collected by Isern and sent to Graells who identified it. A label in hand is attached to it:

Leucea [m. Isern] *rhaponticoi*/ des Graells [m. Graells] / *Hoyocasero* [sic] 5 Agosto 1852 [m. Isern, RCAXII 4736]

LECTOTYPE (designated here): RCAXII 3450

ISOLECTOTYPES: RCAXII 3450(2); RCAXII 4736; MACB 56481; MA.

Colchicum clementei Graells, *Mem. Acad. Ci. Madrid* 4: 483. 1859

Ind. loc.: "Crescit in monticulis gypsaceis prope oppida Aranjuez, Ocaña,

Ciempozuelos, Ontígola, etc. (Graells), et en los campos de Zújar (Clemente in herb. Lagascano.). Floret idibus januarii usque ad nonas vel idus februarii”

[Printed label annotated by Graells] (***) [b label]

HERBARIUM GRAELSIANUM// PLANTAE CASTELLANAE//
Num.// *Colchicum Clementei Graells*/ Crescit in agris incultis prope Aran-/ juez
et Valdemoro. / Mense Februario [m. Graells, RCAXII 5111]

The original materials are three plants with bulb and one flower each.
SINTYPES: RCAXII 5111; MACB 56586 and MA.

Narcissus nivalis Graells, *Indicatio Pl. Nov.* 9. 1854.

Ind. loc.: “Crescit in pratis summis madidis atque frigidis prope nivem montium Carpetanorum alt. 6000-9000’. Floret à mense Aprili ad Julium”

[Printed label annotated by Graells] (***) [a label]

M. P. GRAELLS// HERBARIUM CASTELLANUM// Num.// *Corbularia nivalis Graells*/ In paludosis los Corrales Pra/dera de San Juan Puerto de /Peguerinos supra El Escorial/1851/ [m. Graells, RCAXII 1502].

SINTYPES: RCAXII 1502; LY-GANDOGGER; MACB56583 and MA.

Narcissus pallidulus Graells, *Indicatio Pl. Nov.* 9. 1854.

Ind. loc.: “Crescit in rupestribus regionis submontanae montium Carpetanorum: ad alt. 2500-4000”; etiam inveni in nemorosis Argandae aliisque Castellae”

[Label m. Graells] (***) [c label]

Ganymedes pallidulus Grlls. / in nemorosis regionis / montana montium Carpetanorum / Silla de Felipe II prima/ vere / [m. Graells, RCAXII 1505]

SINTYPES: RCAXII 1505; RCAXII 1505(2); MACB 56584 and MA.

ACKNOWLEDGEMENTS

Thanks are due to Dr. Brigitte Zimmer and Dr. Werner Greuter for his constructive criticism and careful scrutiny of the initial manuscript.

REFERENCES

- BUENO, A. G. & SANCHEZ-MATA, D., 1988. Sobre la obra botánica de M. P. Graells (1809-1898). *Taxon* 37(1): 151-156.
- BURDET, H. M., CHARPIN, A. & JACQUEMOUD, F., 1979. Types nomenclaturaux des taxons décrits par Boissier, Leresche et Levier à la suite de leurs excursions en Espagne de 1878 et 1879. *Mém. Soc. Bot. Genève* 1: 63-82.

- CABALLERO, A., 1846. Ilustraciones de la flora endémica española. *Anales Jard. Bot. Madrid* 6(2): 549-591.
- CARRASCO, M. A., MARTÍN-BLANCO, C. J., GARCÍA, A. & PEREA, A., 1996. Plantas de D. Estanislao Vayreda en el Real Colegio Alfonso XII de San Lorenzo de El Escorial. Madrid. *Anales Jard. Bot. Madrid* 54: 589-594.
- FERNÁNDEZ-CASAS, J. & SUSANNA, A., 1985. Monografía de la sección *Chamaecyanus* Willk. del género *Centaurea* L. *Treballs Inst. Bot. Barcelona* 10.
- GRAELLS, M. P., 1854. *Indicatio plantarum novarum aut nondum recte cognitarum, quas in Pugillo prima descripsit iconibusque illustravit Graells*. Madrid.
- GRAELLS, M. P., 1859. Ramilletes de plantas españolas escogidas. *Mem. Real Acad. Ci. Madrid* 4: 459-493.
- HOLMGREN, P. K., HOLMGREN, N. H. & BARNETT, L. C., 1990. Index Herbariorum, part. 1. The Herbaria of the World. *Regnum Vegetabile* 120.
- LANJOUW, J. & STAFLEU, F. A., 1957. INDEX HERBARIORUM, PART. II (2). COLLECTORS E-H. *Regnum Vegetabile* 9: 175-295.

Recibido: 20 de febrero de 1996
Aceptado: 3 de septiembre de 1996